



Integrated urban actions
for fostering and financing
innovative economies and SMEs

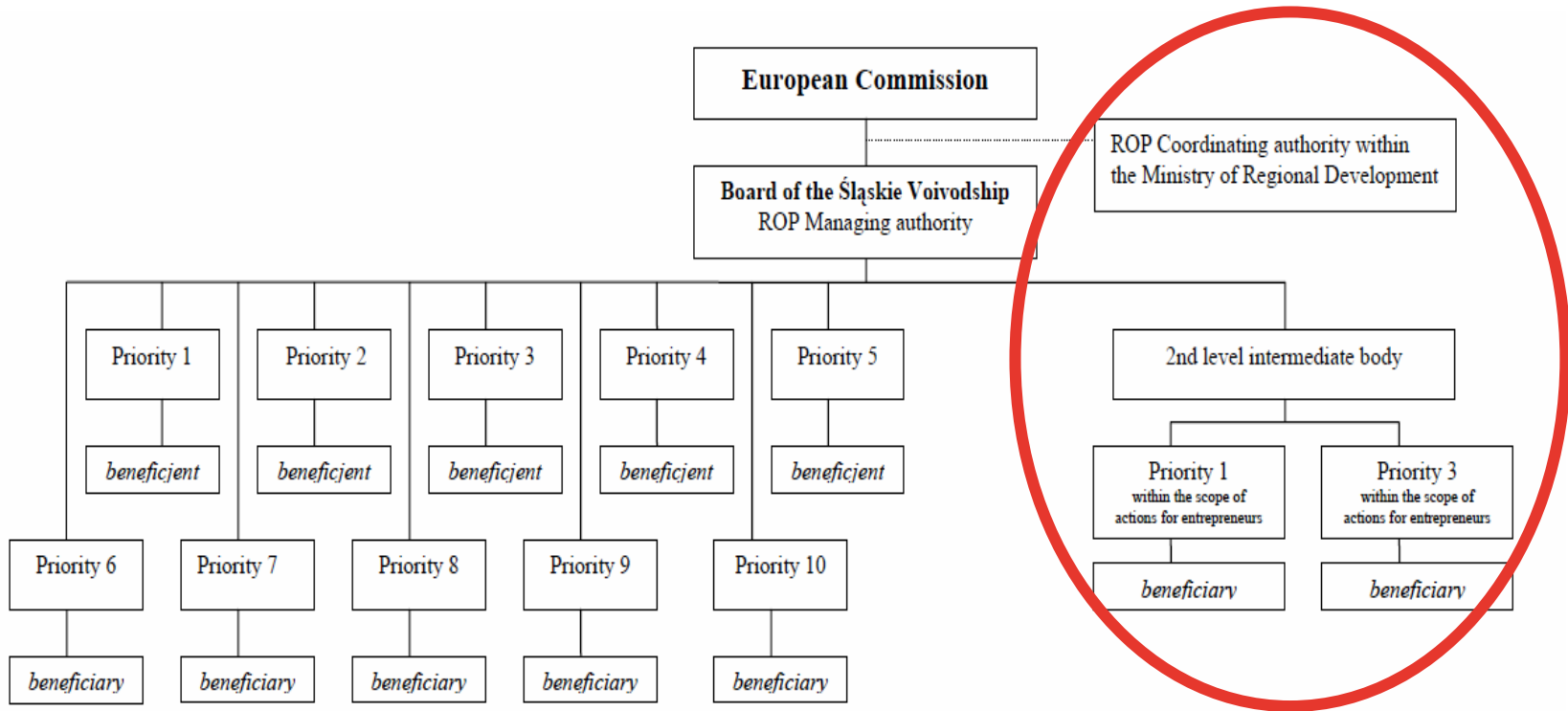
Cooperation with Managing
Authority in Gliwice
Katarzyna Kobierska
09th February 2011



Connecting cities
Building successes



Who is Managing Authority for Gliwice



MA – scope of activity



Silesian Centre of Entrepreneurship – intermediate body
Responsible for activities within the priorities of Regional
Operational Programme:

- Technological research and development (R&D), innovation and entrepreneurship aimed to increase regional competitiveness of knowledge-based economy
- Tourism aimed to increase tourist attractiveness of the region - Investments in tourism infrastructure which contribute to the development of businesses offering complete tourist offer



How is the working process organized?

AN URBACT II PROJECT



- MA as a member of LSG
- cooperation within the project based on exchange of information and sharing knowledge and experience between all of the members

Actions taken within the project



- Survey on the expectations of the local SMEs
- Interpretation of the results of the survey
- Mapping public support schemes
- Local Information Point – defining the scope of the offer
- Consultation of Local Action Plan

Additional value



- Meeting with LSG – field for discussion and exchange of opinions between MA and LSG Members
- Influence on local SME policy in Gliwice – LAP, Local Information Point
- Model of cooperation – no relations between MA and Gliwice within SME field before FIN URB ACT
- Participation in workshops with partners – good practises
- Overcome the bureaucracy

...to be continued ...?



FIN URB ACT is going to be finished and...

- How to sustain the cooperation?
- Is it possible keep the mutual influence of cooperation?
- Who should be involved?

Grazie Thanks
Danke **Merci** Gracias
Ευχαριστώ multumesc
Takk dziękuję dakujem hvala
Obrigado dziękować
tänan kiitos köszönöm aciu
Tack děkuji paldies
nizžik ħajr dank u wel