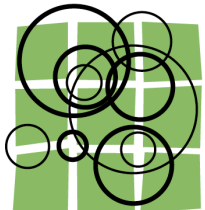




LC-FACIL Kirklees

James Devitt
Sept 13th 2010



LC-FACIL
a working group to facilitate the
implementation of integrated,
sustainable urban development
according to the Leipzig Charter

Connecting cities
Building successes



Kirklees

- West Yorkshire
- Metropolitan District
- 41,000 hectares
- population of 400,000
- 45km from Manchester, 30km from Leeds, 45km from Sheffield, 100km from the Humber ports



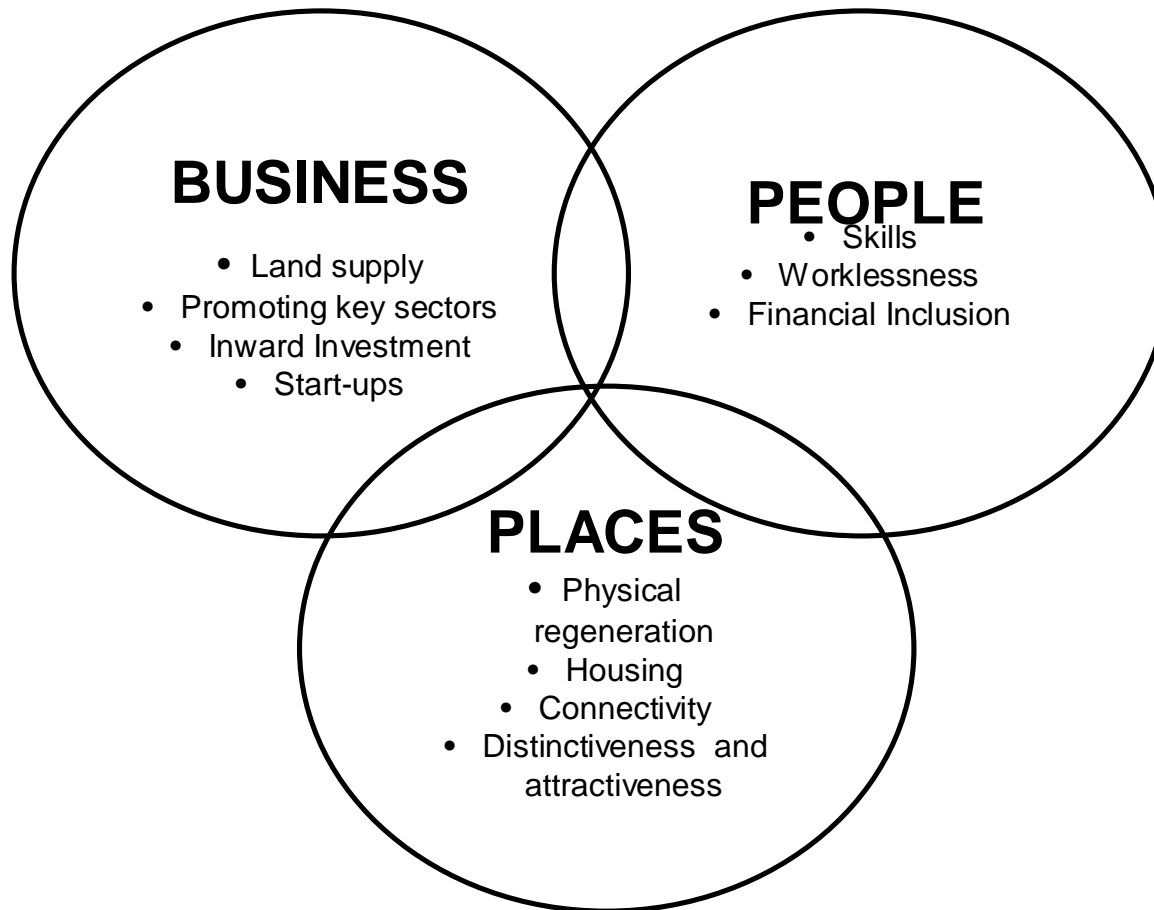
Kirklees LSG and Action Plan

The Action

1. Using the development of the Economic and Sustainable Investment Strategy as a model of good practice in sustainable development
2. Focus on regeneration of Dewsbury (add value to Renaissance / Area Action Plan)

Action 1 – Economic & Sustainable Investment Strategy

- Economic Assessment – January 2010
- New Strategic Investment Service - April 2010
- Draft – To LPSB – May 2010
- Implementation Plan – (end Sept 2010)
 - Sustainability Impact Assessment
- Reference Framework – Testing session (Sept)
- Final Strategy – Autumn 2010



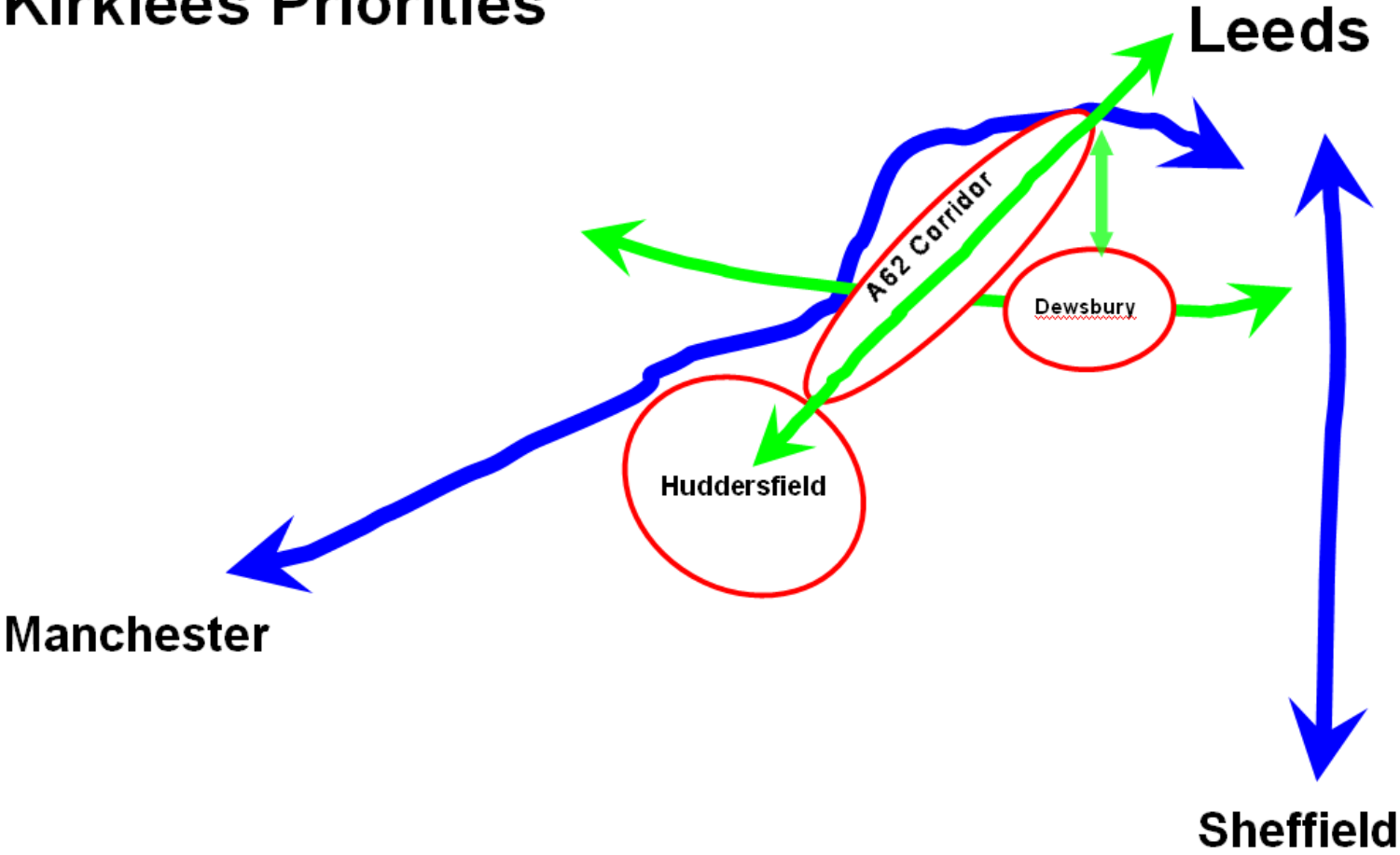
- Partnership Priorities :**
- * Lead Kirklees out of recession
 - * Support older people are healthy, active and included
 - * Enhance life chances for young people
 - * Provide effective and productive services

Outcomes

- **Raising the bar** – build on our strengths
- **Closing the gap** – address inequalities, deprivation



Kirklees Priorities



Our Regeneration Priorities

Greater Huddersfield & The Gateways

- An emerging city
- A diversified economy – University, services and high value added sectors
- Mismatch of housing demand and supply

A62 Corridor Including North Kirklees Towns

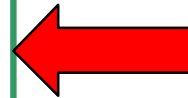
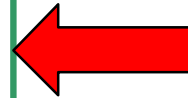
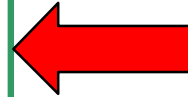
- Strengthened towns
- Employment and housing opportunities
- Focus for regional manufacturing
- Improved accessibility

Dewsbury and the Neighbourhoods

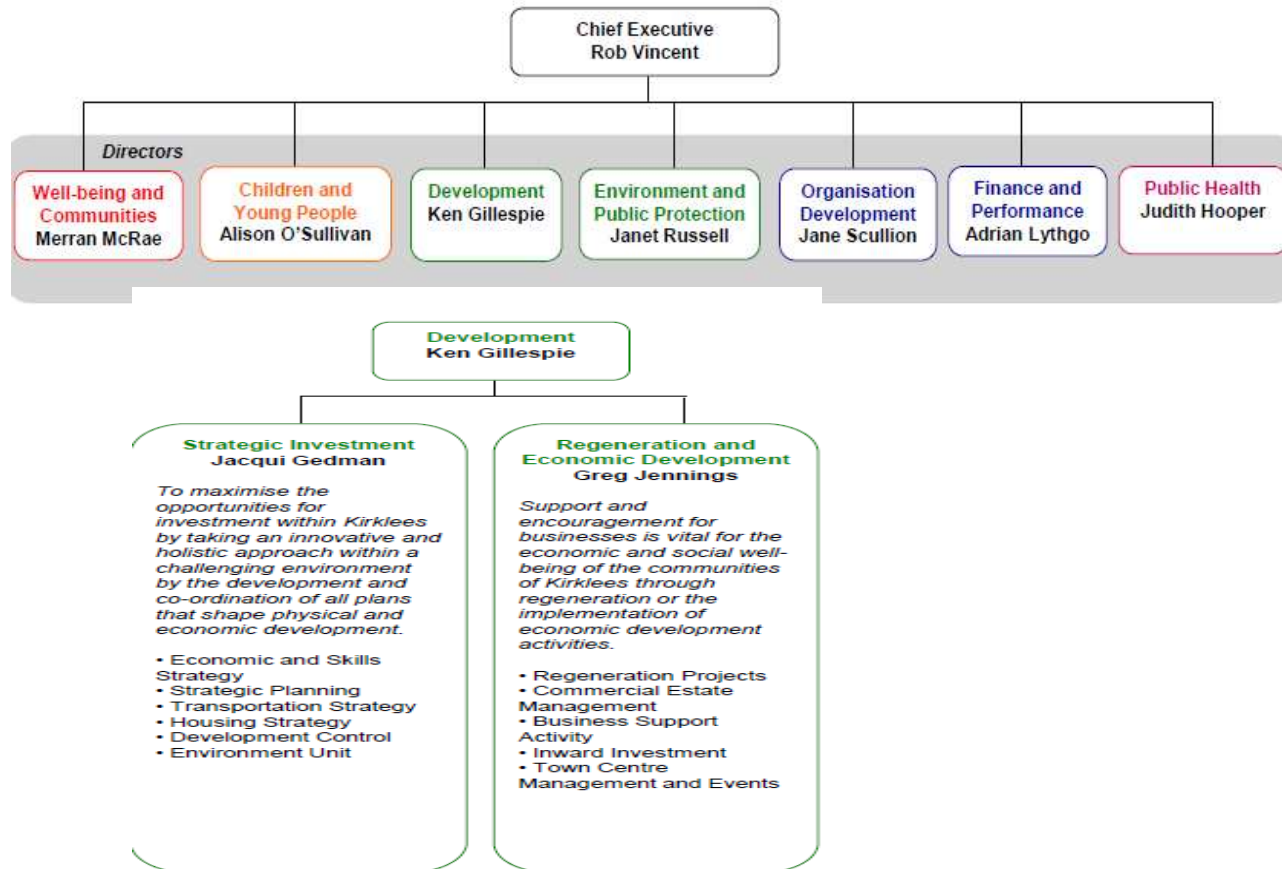
- Create new energy – a strengthened economy, a diverse community, new housing growth
- Connection of communities to future prospects

Green Economy / Low Carbon Living

- Warmzone Plus
- Local employment opportunities
- Improve sustainable transport / public transport
- Sustainable Skills and Business
- South Dewsbury Eco-Settlements



Strategic Investment Service



Action 2 Dewsbury Renaissance

- August 09 – Tenders for Renaissance consultants.
- Sept 09 – selection of Bauman Lyons.
- Oct 09 – Renaissance commences
- Nov 09 – LSG Guided tour of Dewsbury
- Nov 09 - fortnightly, team meetings bringing together all sustainable regen initiatives.

Dewsbury Renaissance

- Dec 09 – Public stakeholder event
- 13-14 Jan 2010 – “Bunker Days”.
- 14 Jan LSG session with the POLIS team,
- 26 February – Launch of the Encounters Shop (A&A programme).

Dewsbury Renaissance

- March (and June) 2010 – Renaissance focus groups,
- June 2010 – Further public engagement via the presentation of masterplan proposals and A&A research at the Encounters shop.
- November 2010 – Publication of the vision and masterplan

Local Support Group

Focus on Integrated Strategy for Dewsbury

= Renaissance

- Yorkshire Forward (MA) – Katherine Langley
- Regeneration & Economic Development – Barry Reynolds
- Colleagues from Planning, Highways, Housing, Environmental Unit, Economic Development – Now all within one Service
- Strategic Investment Service – Jacqui Gedman

Local Support Group (reporting)

- Dewsbury Renaissance Project Group
- Reporting to Dewsbury Regeneration Board (Cllr Sheard & Kane)
- Sustainable Investment Programme Board

LINK with MS/I Group

DCLG / CAP GEMINI

- Introductory meeting at DCLG (London) Sept 09
- Reference Framework – test 10th Sept
- November Dewsbury Conference
- National Support Group ?