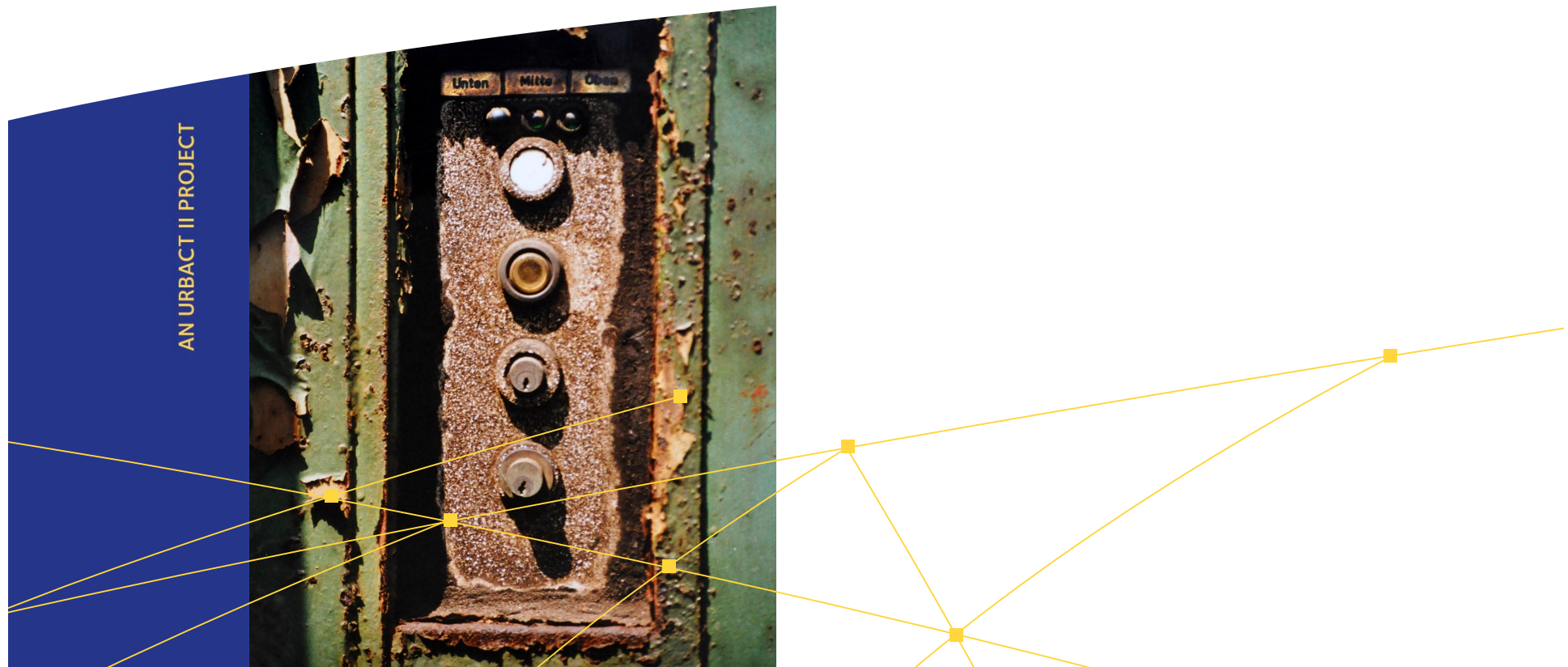


Cooperation-structure between cities and Managing Authorities - Case study North Rhine-Westphalia

Brigitte Grandt | EG DU | City of Duisburg

Linz | 28. / 29. October 2009



EG·DU
Entwicklungsgesellschaft
Duisburg mbH

Connecting cities
Building successes



Contents

- **Germany, NRW and Duisburg – a short overview**
- NRW Operational (= Objective 2) Programme and steps of the funding procedure
- Regional Governance in NRW
- City Governance in Duisburg

Constitutional Structure of Germany

Constitutional Structure of Germany

Der Bund / Federation

Bundesland / Land (Federal State)

Regierungsbezirk / Administrative District (Regions)

(Kreis / County)

Gemeinde / Town

(kreisfreie) Stadt / City

(Cities (like Düsseldorf)
are not part of a county)

Constitutional Structure of Germany

- Constitutional structure is not purely hierarchical but a mixture of hierarchy and side by side responsibilities
- All of the 3 levels are involved in urban policy (vertical co-ordination by two way-discussion)
- Cities and towns are strong players because of
 - the guarantee of self-government in the constitution (which includes urban land use planning)
 - they have an own tax base

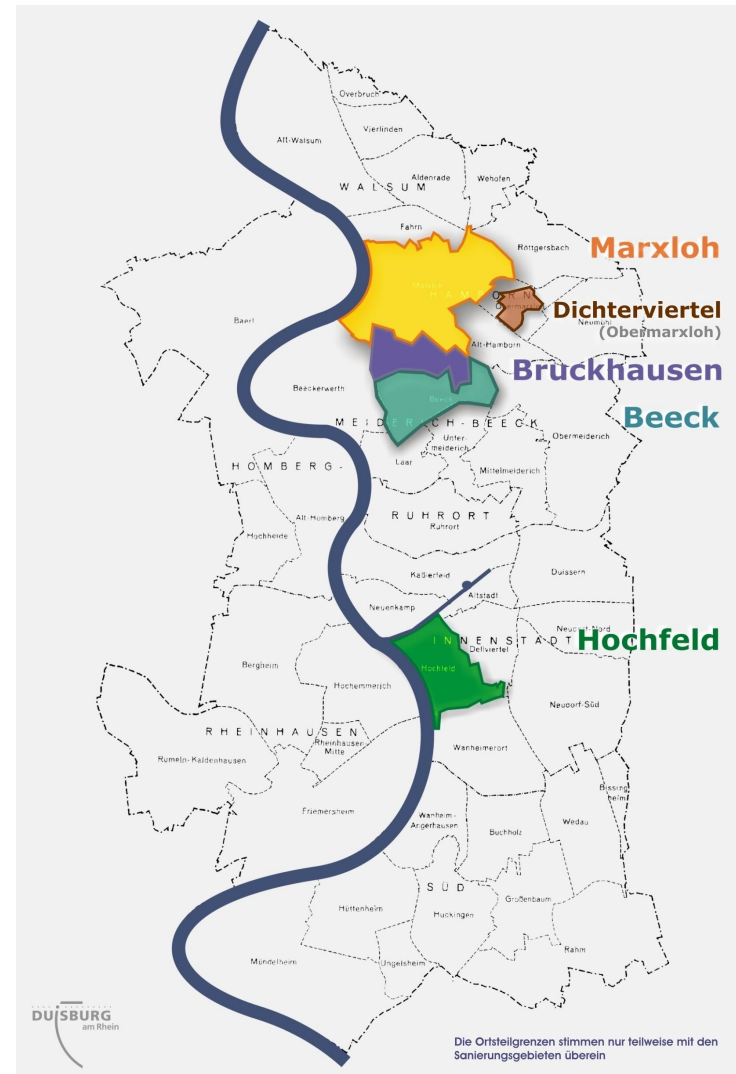
North Rhine-Westphalia (NRW) (= Regional Government for ERDF)

- 18 mio. People
- 530 people / km²
- 5 Administrative Districts
(Bezirksregierungen)
- 396 Cities and towns
(Gemeinden)



City of Duisburg

- 46 neighbourhoods combined in
- 7 districts (Walsum, Hamborn, Meiderich/Beeck, Homberg-Ruhrort-Baerl, Rheinhausen, Mitte and Süd)
- About 233 km²
- 492 870 inhabitants



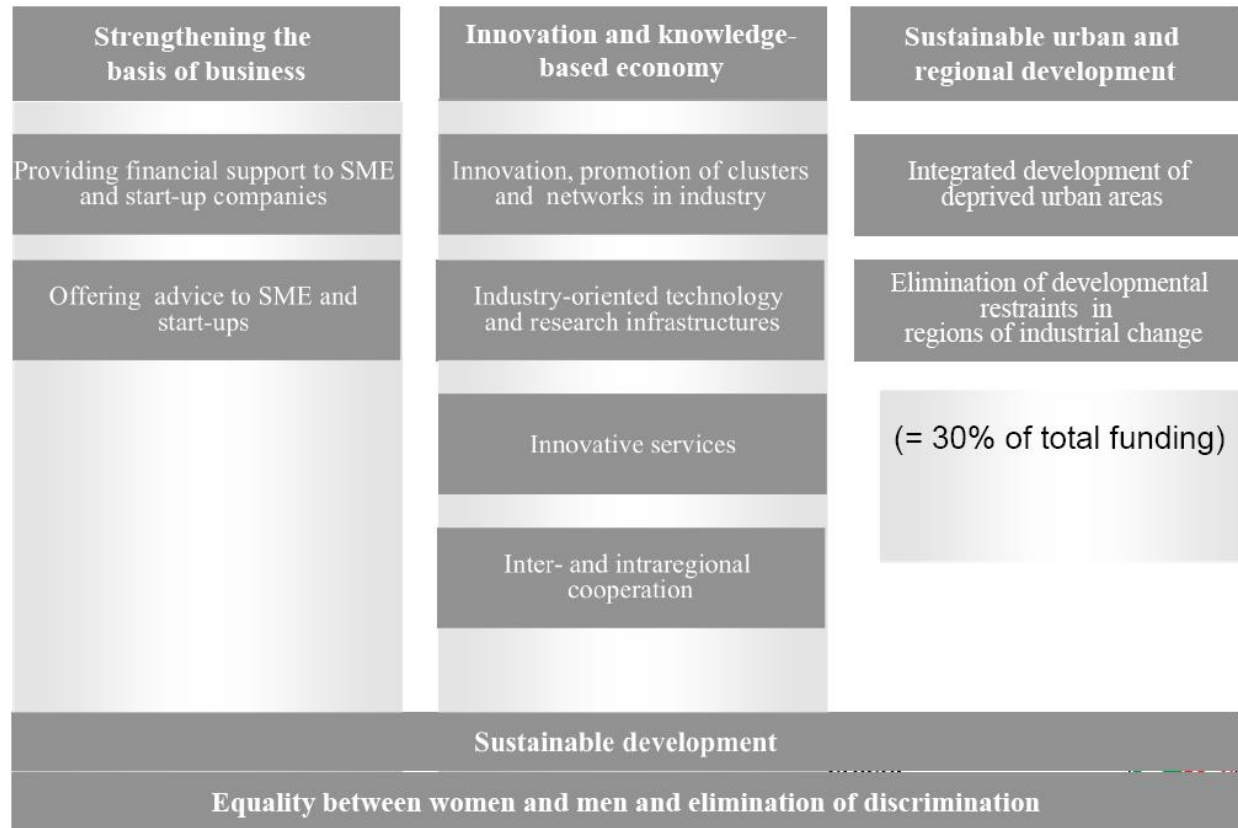
Contents

- Germany, NRW and Duisburg – a short overview
- **NRW Operational (= Objective 2) Programme and steps of the funding procedure**
- Regional Governance in NRW
- City Governance in Duisburg

NRW Objective 2 Programme 2007-2013 (ERDF)

AN URBACT II PROJECT

NRW Objective 2 Programme 2007- 2013 (ERDF)



Participative development and implementation of an integrated LAP by the city

- 1) ILAPs define a comprehensive strategy for 5 to 10 years and contain (an analysis of the situation, priorities for the area, measures to improve the situation and a financial plan)

For example:

- Focus on building measures (improvement of public spaces), other measures can also be funded (i.e. targeted on the local economy, integration or ecology), different players wanted: municipality, other ministries, private stakeholders (= horizontal coordination on the city level)
- 2) Development of a Measures, Time and Cost Plan in connection with other programs (ESF, national and regional programs,...) and private actors (e.g. housing industry)

- 3) Application (= ILAP) audited by an interdepartmental steering committee (= horizontal co-ordination on the ministry level)
- 4) - If approved: funding of concrete projects can be applied for each year – by different ministries
 - If necessary: updating of the ILAP possible
 - schedule of all approved projects annually published by the ministry (= transparency)
- 5) Monitoring and evaluation
- 6) Creating consistency: Elaboration of strategies to guarantee the project's sustainability and long lasting success

Contents

- Germany, NRW and Duisburg – a short overview
- NRW Operational (= Objective 2) Programme and steps of the funding procedure
- **Regional Governance in NRW**
- City Governance in Duisburg

Networks of cities

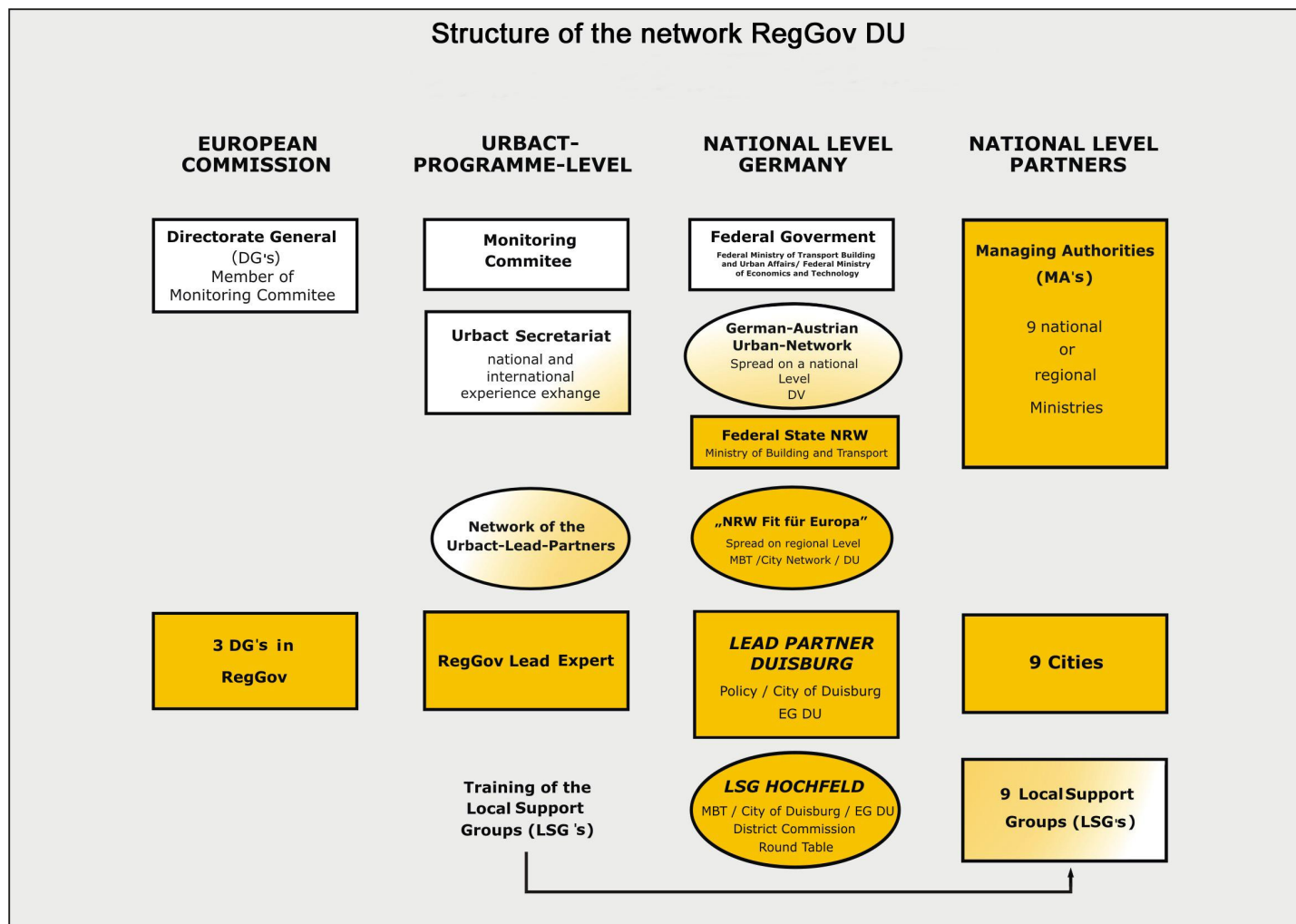
3 networks focussing on specific aspects of urban policy

- City Network Socially Integrative Cities
- City Network Urban Restructuring
- City Network City Centres

2 networks focussing on European policy

- German-Austrian Urban Network
- NRW-cities going Europe

Structure of the network Reg Gov DU



Networks of cities

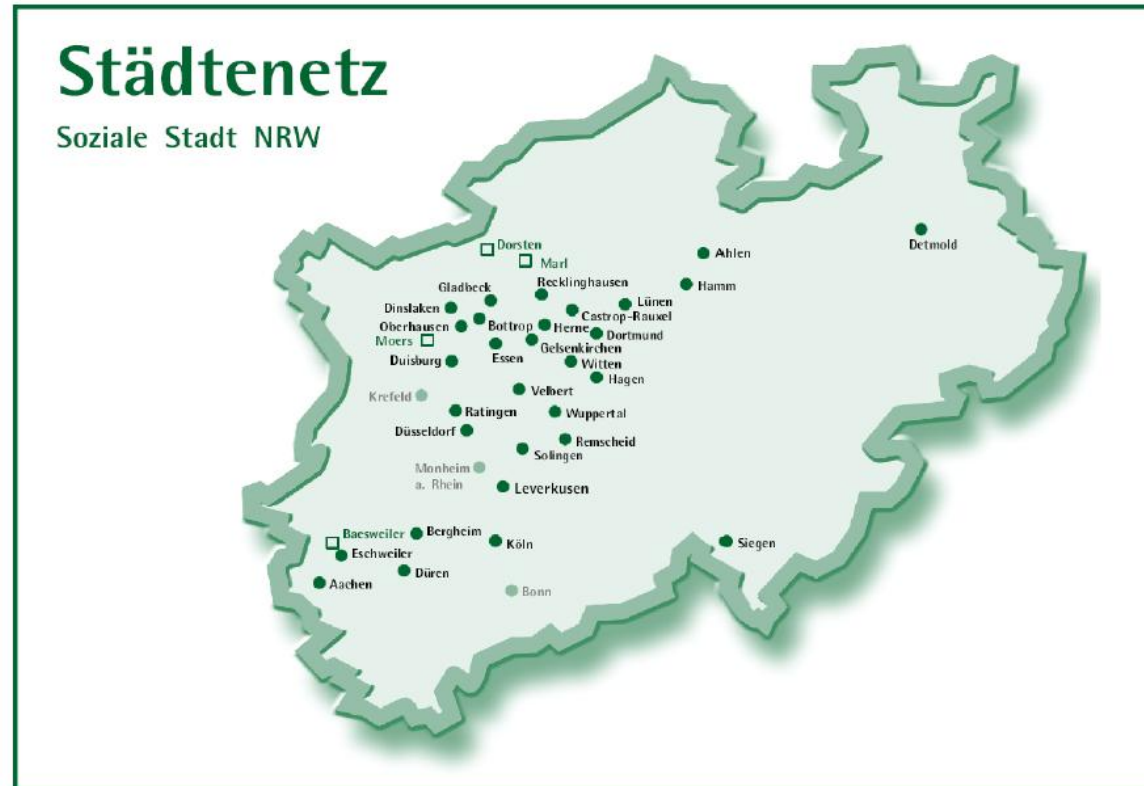
Objectives/expectations:

- Exchange of information and ideas
 - between cities and
 - between cities and ministry
 - about the funding programmes and their implementation (i.e. requirements of monitoring and evaluation)
 - about experiences and good examples
 - guidance for new cities

- Public Relations

- Reduction of extensive competition/ improvement of intermunicipal cooperation

Members of the City Network “Socially Integrative City North Rhine-Westphalia”



Städtetz
Soziale Stadt NRW

- Today: over 30 cities with a total of more than 50 neighbourhoods

NRW Fit für Europa (1)

Components NRW Fit für Europa (2009-2011)

1. NRW is active in the German-Austrian-Urban-Network
 - Membership fee in the network
2. NRW is active in the European URBACT-Network
 - Participation in the Thematic Workshops
 - Material for the practice in NRW
3. NRW's Urban Development Policy is present in Europe
 - "Good Practice"-brochures
 - Designing of an exhibit for international conferences

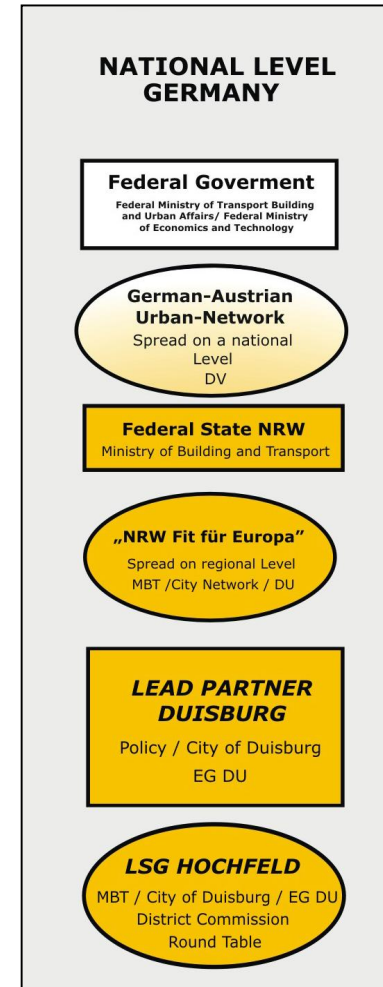
NRW Fit für Europa (2)

Components “NRW Fit für Europa” (2009-2011)

4. Thematic Workshops
5. International Conference 2011

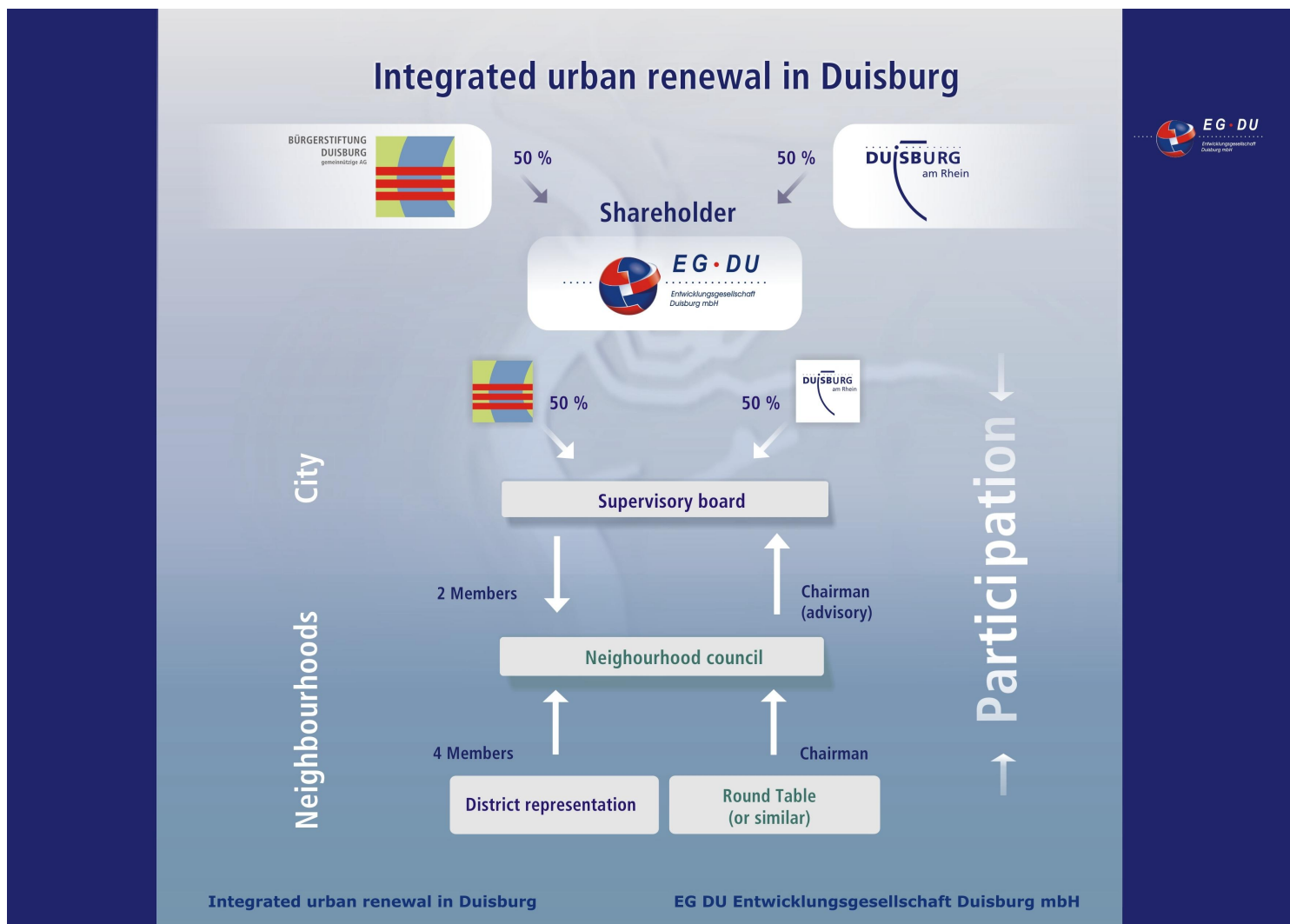
Contents

- Germany, NRW and Duisburg – a short overview
- NRW Operational (= Objective 2) Programme and steps of the funding procedure
- Regional Governance in NRW
- **City Governance in Duisburg**



Integrated urban renewal in Duisburg

AN URBACT II PROJECT



Integrated urban renewal in Duisburg

EG DU Entwicklungsgesellschaft Duisburg mbH



FIN-URB-ACT work meeting II
Linz 28. / 29. October 2009



Round Table Duisburg

AN URBACT II PROJECT



Contact Details:

RegGov Network

c/o Brigitte Grandt [Lead Partner]

EG DU Entwicklungsgesellschaft Duisburg mbH

Willy-Brandt-Ring 44

D - 47169 Duisburg

Phone: ++49 203 994 29 40

eMail: bgrandt@eg-du.de

Internet:

http://urbact.eu/reg_gov

Grazie Thanks
Danke **Merci** Gracias
Ευχαριστώ multumesc
Takk dziękuję dakujem hvala
Obrigado dziękować
tänan kiitos köszönöm aciu
Tack děkuji paldies
nizžik ħajr dank u wel