



*Expertising Governance for Transfrontier Conurbations*



## **Trinational Eurodistrict Basel (TEB)**

**Véronique BITTNER**  
*Regio Basiliensis*

The Local Action Plans to improve project partners'  
cross-border governance

« EGTC » URBACT Final conference

*Esztergom, 6 May 2010*

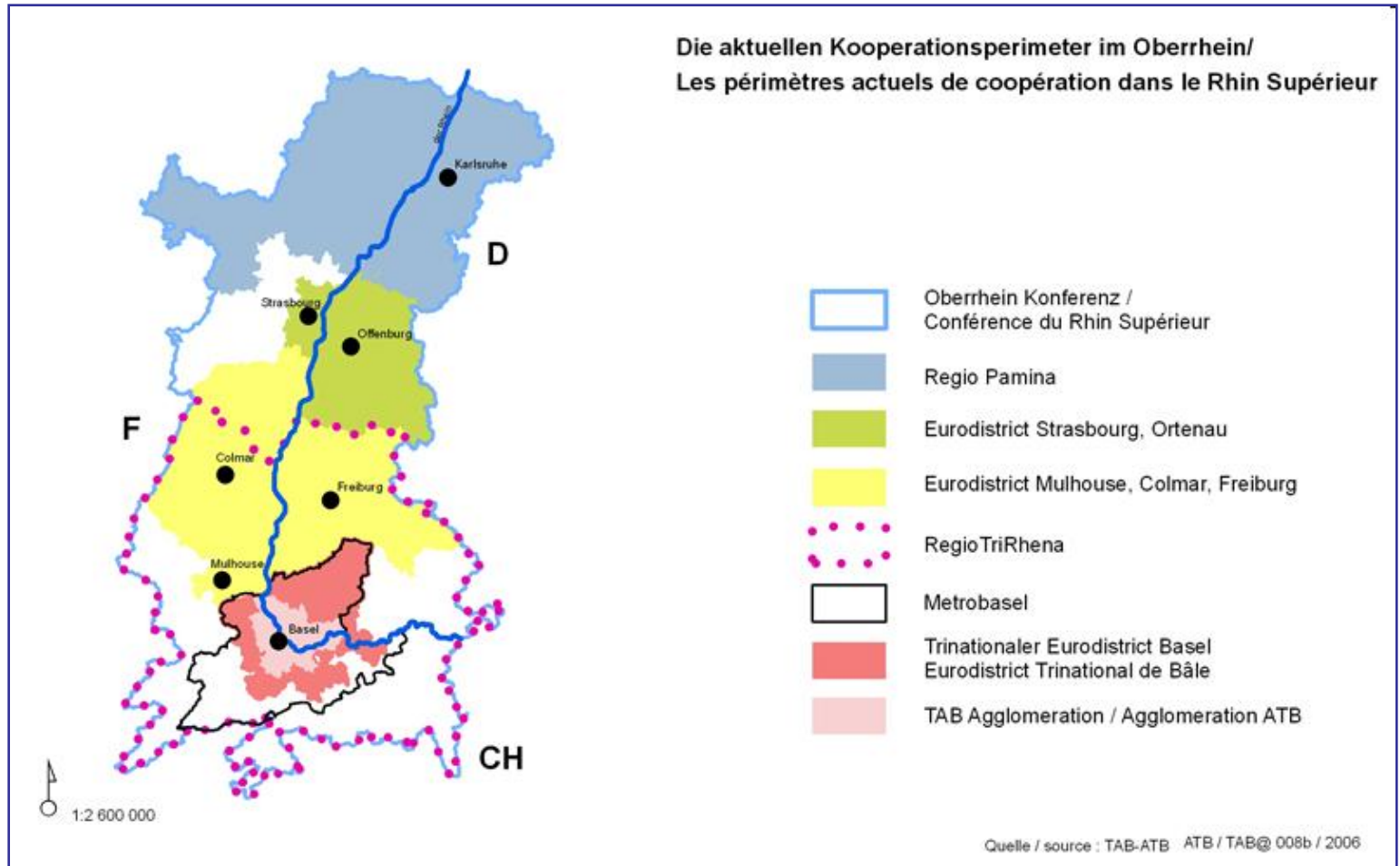




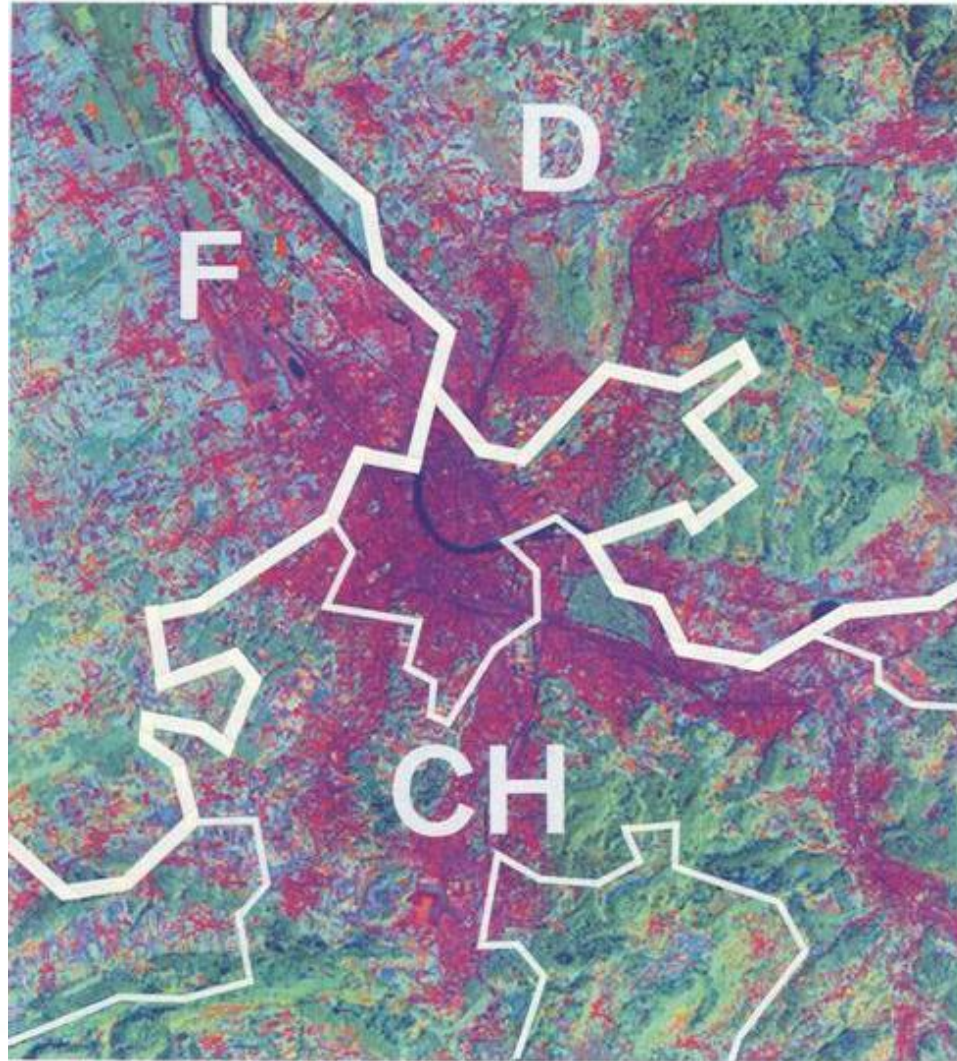
**SWITZERLAND / GERMANY /  
FRANCE**



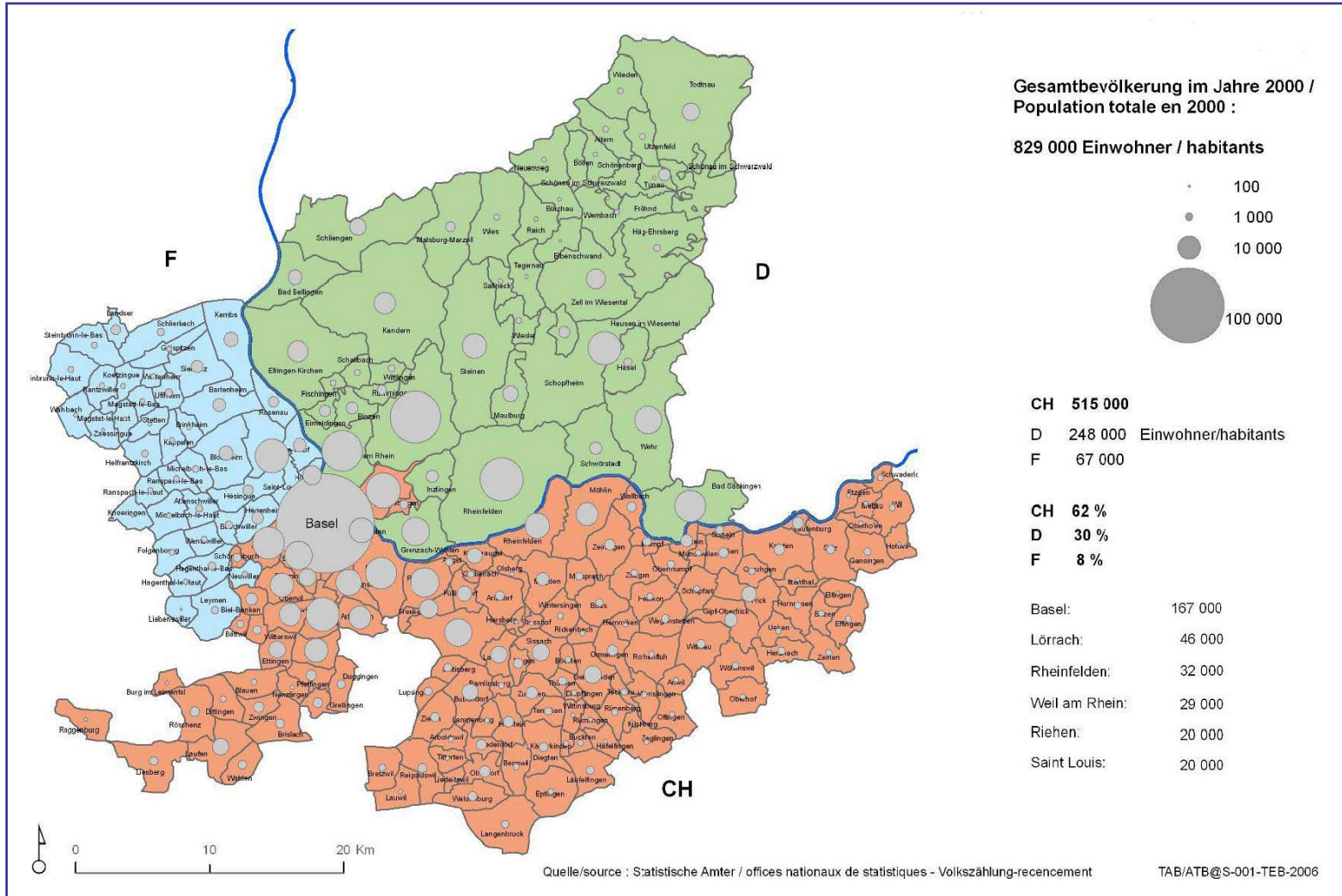
Die aktuellen Kooperationsperimeter im Oberrhein/  
Les périmètres actuels de coopération dans le Rhin Supérieur

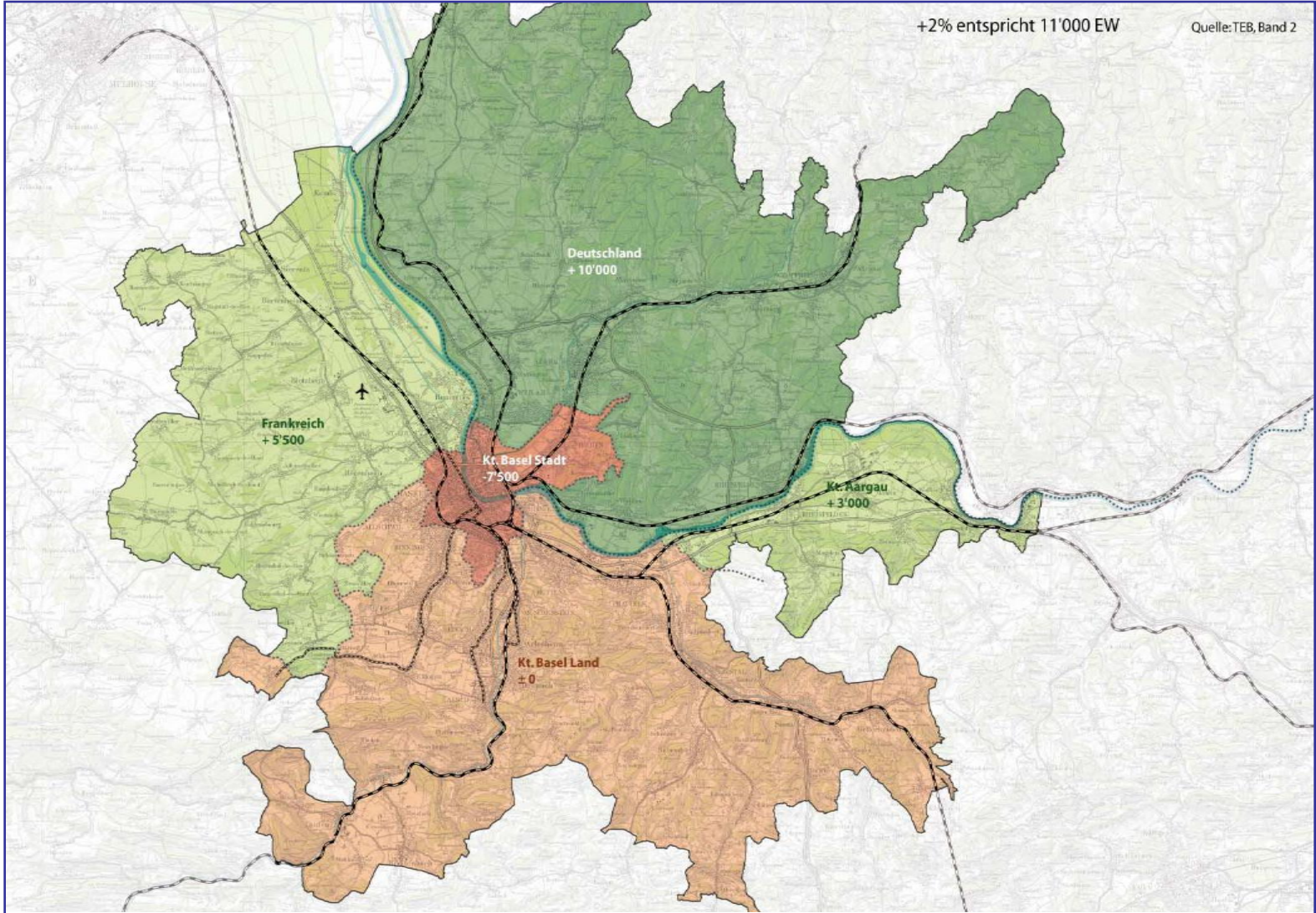






Copyright: MCR Lab Universität Basel





## Trinational Eurodistrict Basel

*The territory extends over a broad variety of territories:*

- *dynamic urban areas in Basel*
- *rural areas in the Sundgau (F), the Black Forest (D) and the Jura Mountains (CH)*





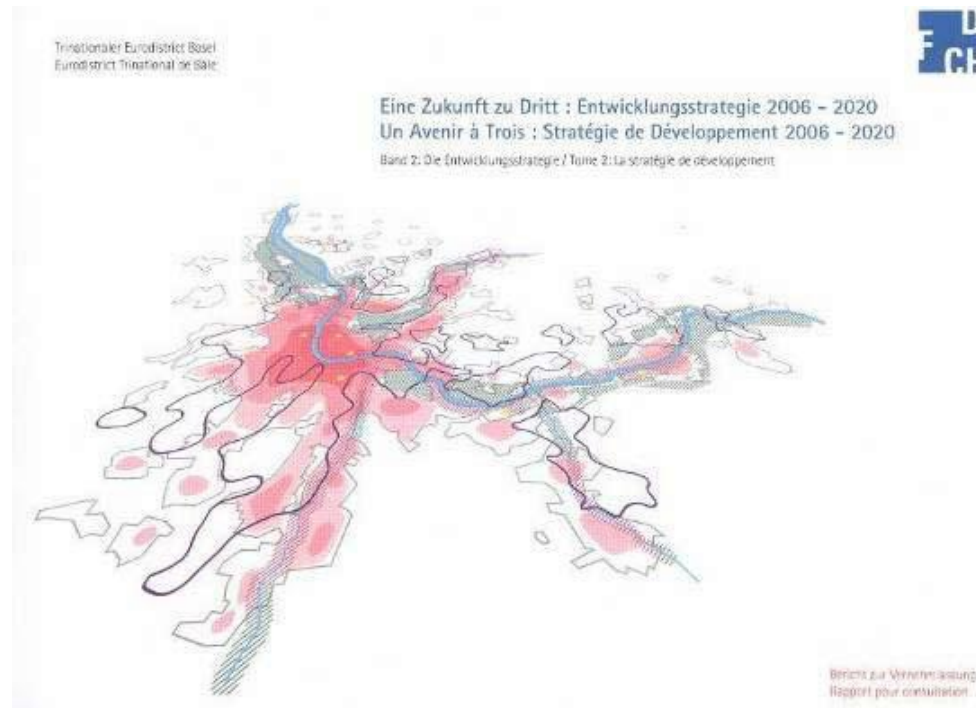
## City of Basel

- *Economic centre: pharmaceutical, banking, insurance industry*
- *Less affected by the economic crisis than other cities*
- *Investments in order to adapt the infrastructures to the needs of the big companies and of the knowledge economy*
- *Need of about 30 000 highly qualified jobs till 2020 (source : Prognos / metrobasel)*
- *About 30 700 border workers from F to CH and about 27 500 border workers from D to CH*

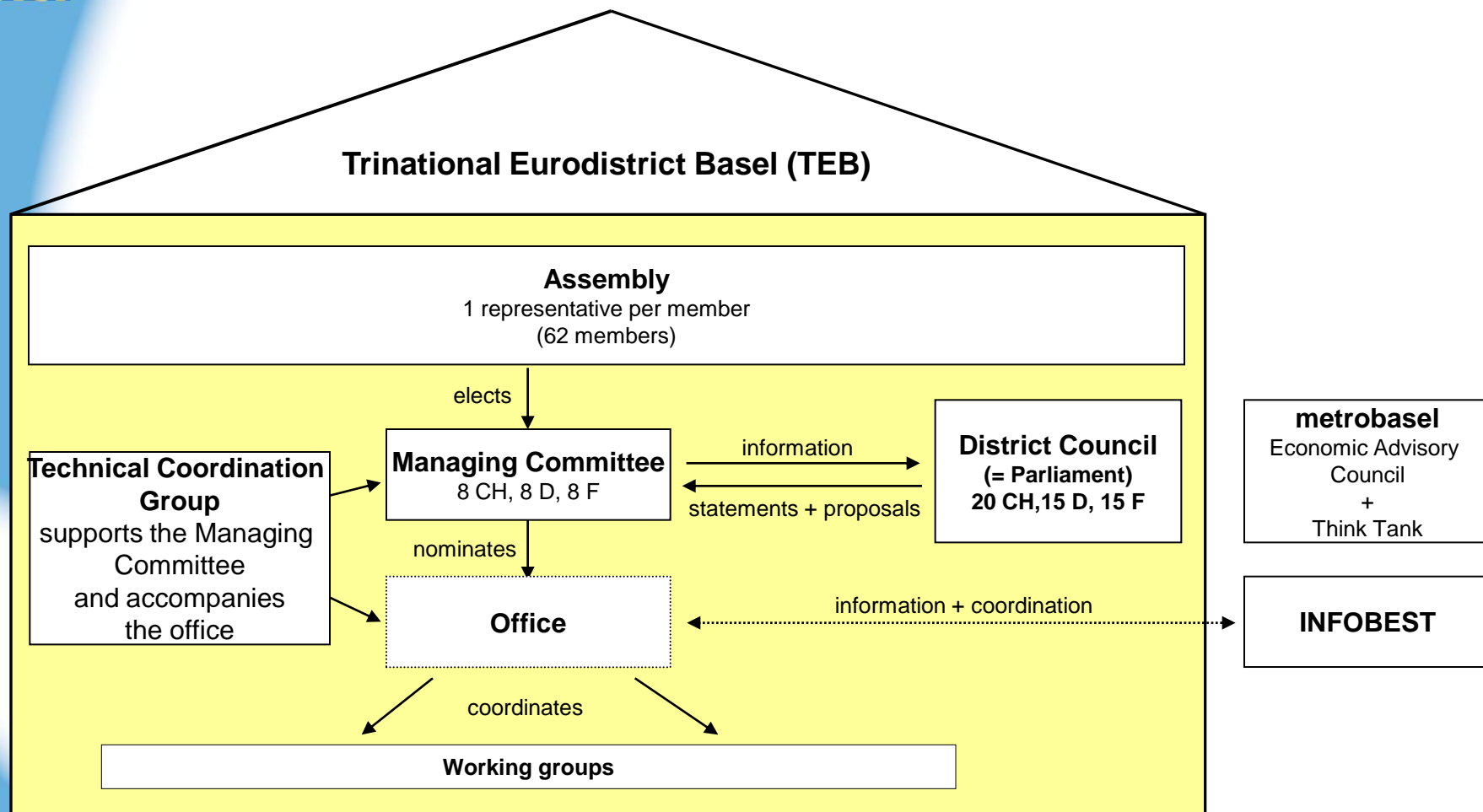
## Trinational Eurodistrict Basel

- *Non-profit association under french local law*
- *Forum for discussion and laboratory of ideas for decision-makers*
- *Is at the service of the F, D und CH planning institutions*
- *Aims:*
  - *Stimulate the process of cross border functional integration*
  - *Ensure a good quality of life*
  - *Carry out joint cross border projects*
  - *Improve the cross border governance structures*
  - *Strengthen the regional identity*

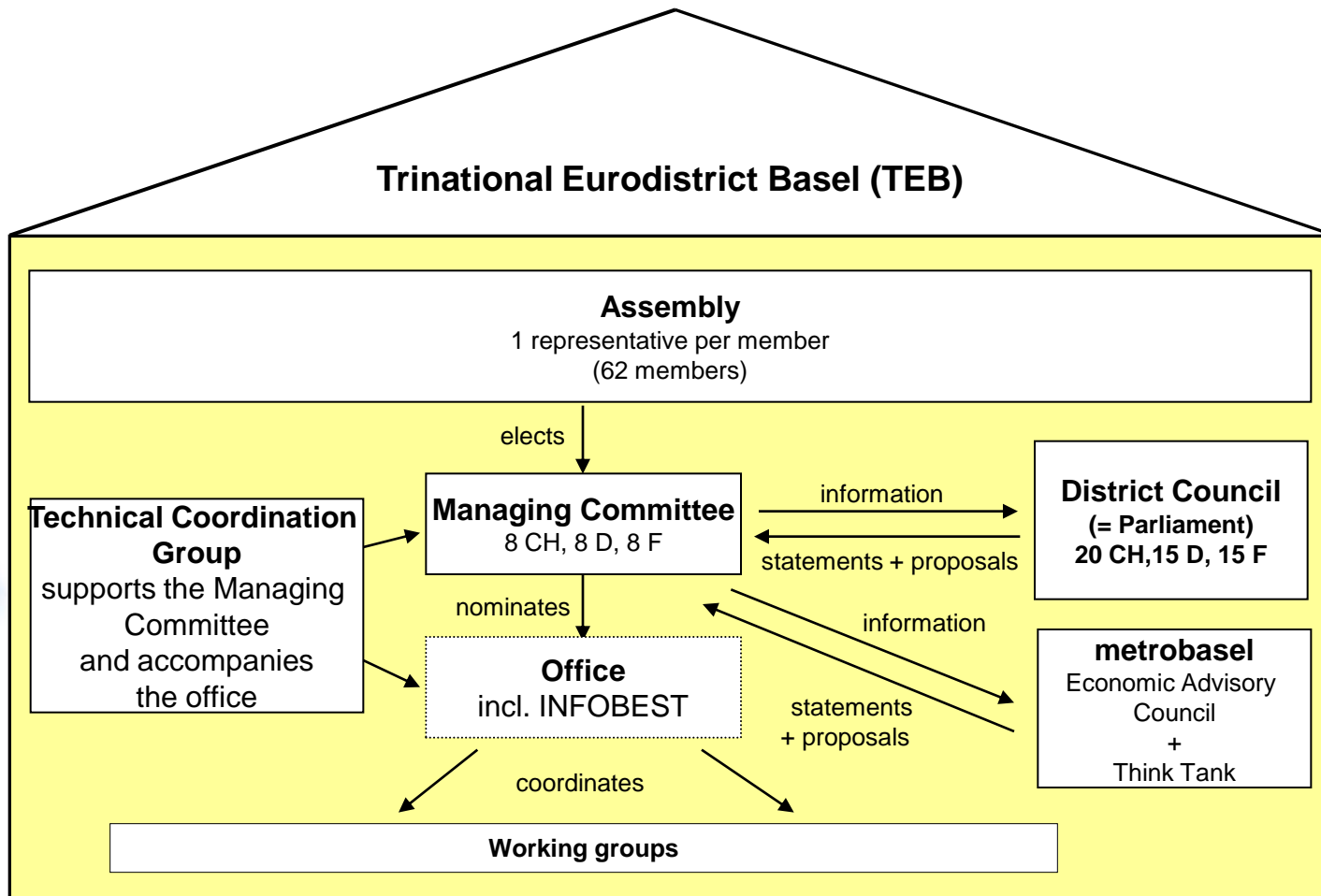
## Urban development strategy 2002-2006



## Governance structure - Starting situation



## Governance structure – Targeted result



## Leadership



ETB Eurodistrict Trinational de Bâle  
TEB Trinationaler Eurodistrict Basel

INFOBEST  PALMRAIN



metrobasel

Plattform für die Entwicklung  
der Metropolitanregion Basel



## Challenge 1: improved governance

Type of action	Partnership (with the lead partner)	Description of the action	Intended outputs	Timescale (short, medium and long-term)	Financial sources and amount	Recommendations at regional, national and European levels
<b>Action 1:</b> Better coordination between Managing Committee and District Council		Improved exchange and better coordination of subjects and projects	Development of common subjects and projects in a targeted way	Short-term	TEB budget	
<b>Action 2:</b> Better cooperation with INFOBEST		Intensification of collaboration on content, formal and organisational aspects	Creation of synergies  Coordinated public relations	Medium-term	No additional funds required	
<b>Action 3:</b> Better cooperation with institutions in Upper Rhine		Exchange and coordination with other Eurodistricts and the Upper Rhine Conference	Division of tasks according to subjects and know-how transfer	Medium-term	No additional funds required	

## Challenge 2: Common settlement and transportation development

Type of action	Partnership (with the lead partner)	Description of the action	Intended outputs	Timescale (short, medium and long-term)	Financial sources and amount	Recommendations at regional, national and European levels
<b>Action 1:</b> Joint strategic development		Implementation of the TEB development strategy	Qualitative lasting development and growth	Long-term		
<b>Action 2:</b> Project Mobility 2020		Realization of the INTERREG-Project Mobility 2020	Improved mobility and accessibility	Medium-term	INTERREG IVA-Project	
<b>Action 3:</b> Project IBA BASEL 2020		Realization of the INTERREG-Project IBA Basel 2020	Development of common economic and living space	Medium-term	INTERREG IVA-Project	



## Challenge 3: Communication strategy

Type of action	Partnership (with the lead partner)	Description of the action	Intended outputs	Timescale (short, medium and long-term)	Financial sources and amount	Recommendations at regional, national and European levels
<b>Action 1:</b> Creation of a communication strategy		Development of communication measures	Better public relations and perception	Short- to medium-term	About 20,000 €	
<b>Action 2:</b> Project "One branding"		Development of a common branding for the cross border institutions	Better comprehensibility (→ population)	Short- to medium term	No additional costs	

# Civil Society - Good Practices

Tram  
grenzenlos  
Basel – Weil am Rhein



INFOBEST  PALMRAIN

## Lessons learnt

*For the Trinational Eurodistrict Basel, it was particularly interesting to compare the way other cross-border agglomerations organise their cooperation*

*We have learned about :*

- *The creation of a EGTC*
- *The cooperation with the French state*
- *The financing of cross border structures*
- *The integration of the population in the cross border cooperation*

## Perspectives

- *The Local Action Plan has been approved bei the TEB Managing Committee on April, 30th 2010*
- *One of the TEB's main concerns is to reduce the negativ effects of national borders*
- *Therefore, the actions which have been defined in the Local Action Plan will be continued*
- *The cooperation with the other project partners will be continued on an informal level*
- *The question of a possible creation of a EGTC für the TEB has not been answered yet.*



*Thank you*

*[www.eurodistrictbasel.eu/](http://www.eurodistrictbasel.eu/)*

