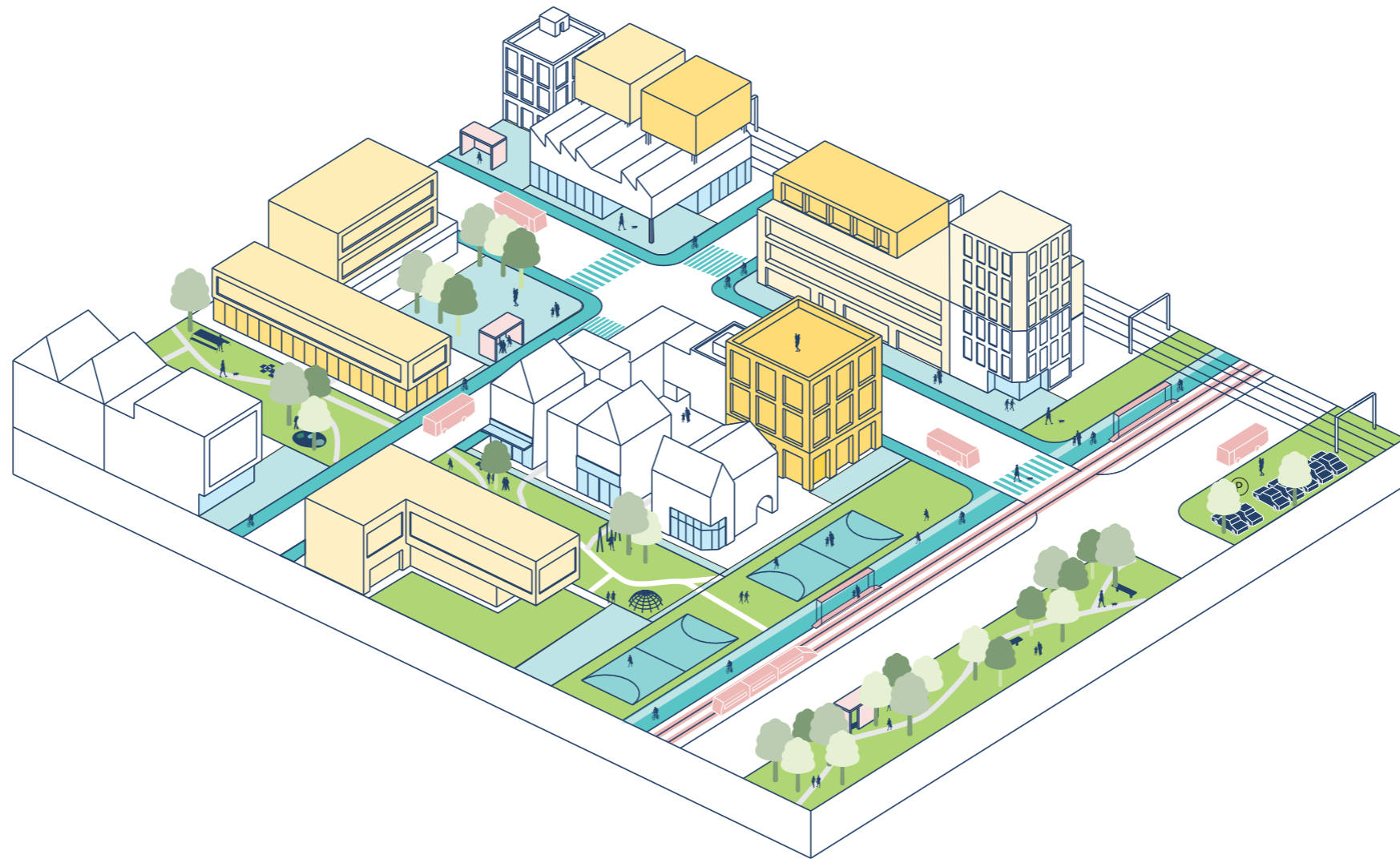


# Urban Challenges: Fringe Solutions

Moderated by Jan Edøy



Practitioners' view

Erik Florberger

*Temporary use in the harbour area, Gothenburg*



Göteborgs  
Stad

---

ÄLVSTADEN

# Temporary use in the Frihamnen

Urban Challenges-Fringe Solutions  
Conference 13 June 2017, Brussels

Erik Florberger, Urban planner  
City Planning Authority

# Platsbyggnad

Planning as a juridical and relational strategy

THANKS TO:

Kristoffer Nilsson, SBK  
Jessica Segerlund, ÅU



# Rivercity

RiverCity Gothenburg will be open to the world. It will be inclusive, green and dynamic. It will be designed in a way that connects the whole city, embraces the water and reinforces the regional centre. Success in this endeavor requires openness, collaboration, knowledge development and strong leadership.



Temporary activities and uses will be used to inject vitality into the area, to create a vibrant area, to test new ideas and to demonstrate that change is happening. Temporary activities and uses will take place in the various parts of the area alongside the transformation process and as major projects fall into place. The temporary activities and uses will be used to highlight life as it is at present and at the same time demonstrate the potential of the area.

**SHOW ME, DON'T TELL ME**

## The dialogue in Vision Älvstaden

1680 ideas on Gothenburg's 400th anniversary ( 2021 )

As well as an activity based part to investigate the dialogue beyond language - to participation

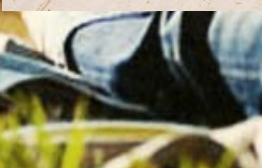
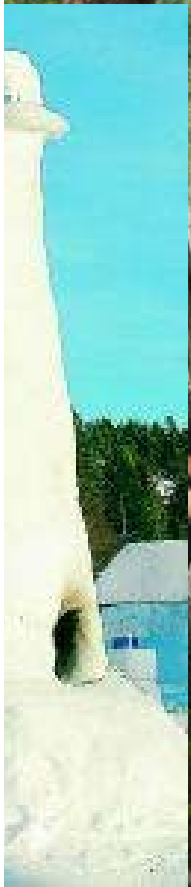
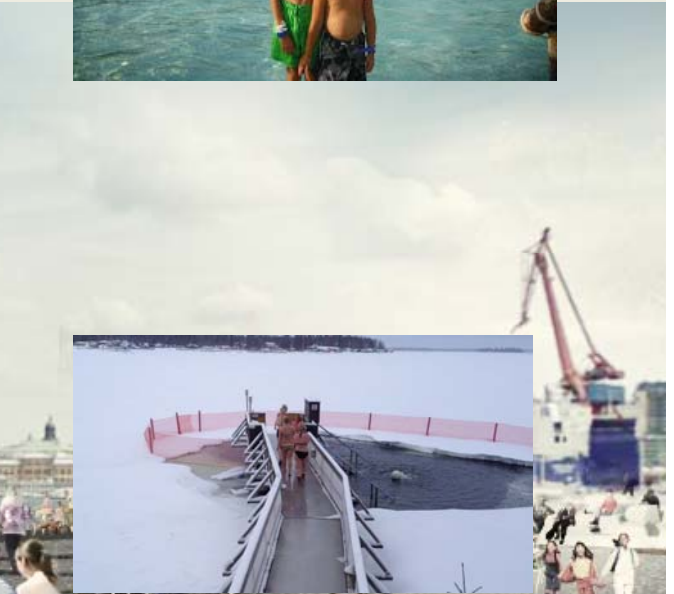


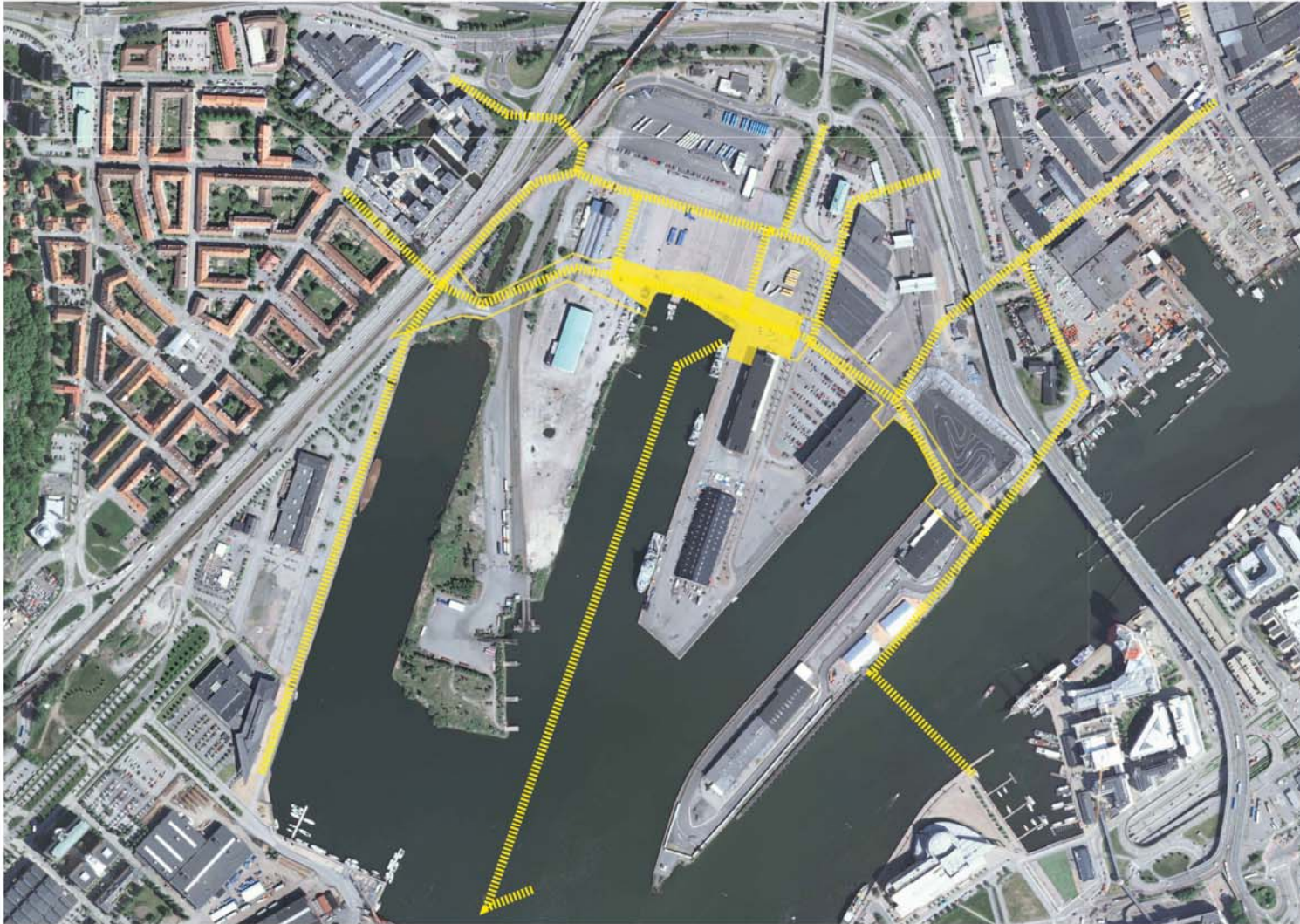
Place building is based on project- and site- specific conditions and examine them in relation to the vision, current planning and studies.

- Locate the area's direct potentials rather than the future. Advocating and start a - step by step - development
- Caring for the time gap available in all major development projects and make it into an asset.
- Create prerequisites to build an area around a location which is available and which is utilized.
- Create situations in planning for a direct dialogue by adding a new language 'doing' and negotiation of the site's functionality and identity through the co- creation.









2013-14

Identifying existing values  
Set up organisation  
Build on dialouge  
thematics for project  
set up  
Identify collaborators  
Create the city as a whole - a stakeholder (economical interestes and shared risks)

Planning 50%  
Prototyping 50%

# "UTGÅ FRÅN DET SOM FINNS"

**ARVET AV // I HAVET**  
En markör av det postindustriella landskapet en 15x12 meter stor pir leder ut mot älven. Piren lutar i sydlig riktning omgiven av vatten.

**RYGGGRADEN -**  
Efter att ha öppnat upp det inre stråket kan de tre pirenna sammankopplas. Stråket ger inte bara en sammankoppling mellan de tre pirenna men i förlängningen också till Kville och City.

**GEOMETRISKA FORMER**  
Slumpgenererad skönhet med linjer av betong resmor i asfalten i riktning mot älven.

**MAGASIN 113**  
Med fyra individuella fasader och ett minne av tidigare hamnfunktioner är Magasinet en viktig del av parken. Magasinet bottenvåning kan användas som ett skyddat rum i parken och lastbryggan agerar Jubileumscen.

**POSTINDUSTRIELL BIOTOP**  
Övervuxen kajkant och slutet på Kvillepiren. Naturligt spridd och orörd av människan, en vild mix av gräs, vass, buskar och träd.

**DEN BLÅA PARKEN.**  
Med en vidd på 120 meter inne i hamnbassängen, ger detta en ram till den yttre urbana kontexten och älven.

**INRAMAD VILDHET**  
Vattenrummet är inramat olika kaj kanter som skapar spännande möten. Stora stenar där material från havet spolas upp, skarpa betong och sten kanter och överväxta slänter.



Vild natur.



Älvkanten.



Betongspår i asfalten.



Spår från hamnverksamhet.



Jubileumscen vid magasin 113.

*14th of March 2014 Jubileumsparken*

Urban Basics, Cultivation culture , Playground future, Bathing  
culture, Yes we say yes



*14th of August 2015, Jubileumsparken*





### 1. Urban Basics

A basic infrastructure is instantly needed in order to make the area accessible . Public transport, bus and boat, signs, pedestrian and cycle routes that creates connections to surrounding neighborhoods. Lighting is crucial for the activities to be carried out in the area. A physical area of Frihammen is defined and named. A "backbone", that follows the planning Frihammen / Jubilee Park in 2021 and constitutes Phase 0.5.



## **2. Culture of collective Farming**

To initiate the park's gradual greening a large space for urban farming is prepared and operated in collaboration with the Real Estate office, communities and individuals.





### **3. Playground The Future**

The Playground project is put together with a water art to project to start the Playground The Future

Artists are invited to project manage the design together with school classes from the surrounding area. The construction is activated to a parallel planning process where the common room is discussed from the - playground



#### **4. Yes, we say yes!**

Within the framework of place building a theme is selected and dedicated resources and process management.

.



## **5. Bathingculture**

The initiation of the construction of a public bath in the Frihammen. A clear visual marker and a year round meeting space in the area. The bath is tested through three - four different prototypes of possible content for a bath in Frihammen The prototypes creates a collage of bathing culture together. The bath starts with a clear autumn and winter profile.



Rulleivi

*Make the most of the existing space and place*



**PARK 113**





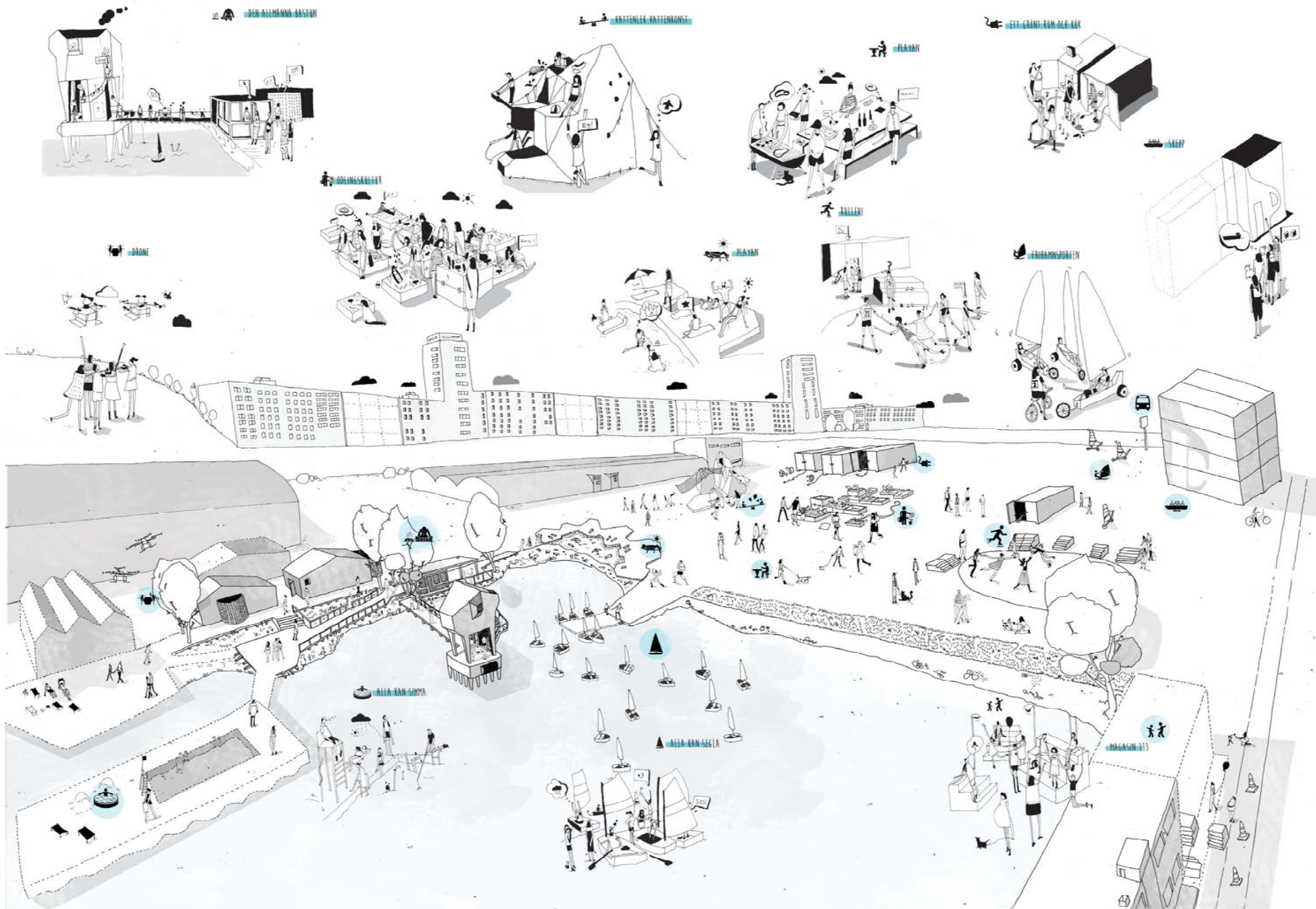












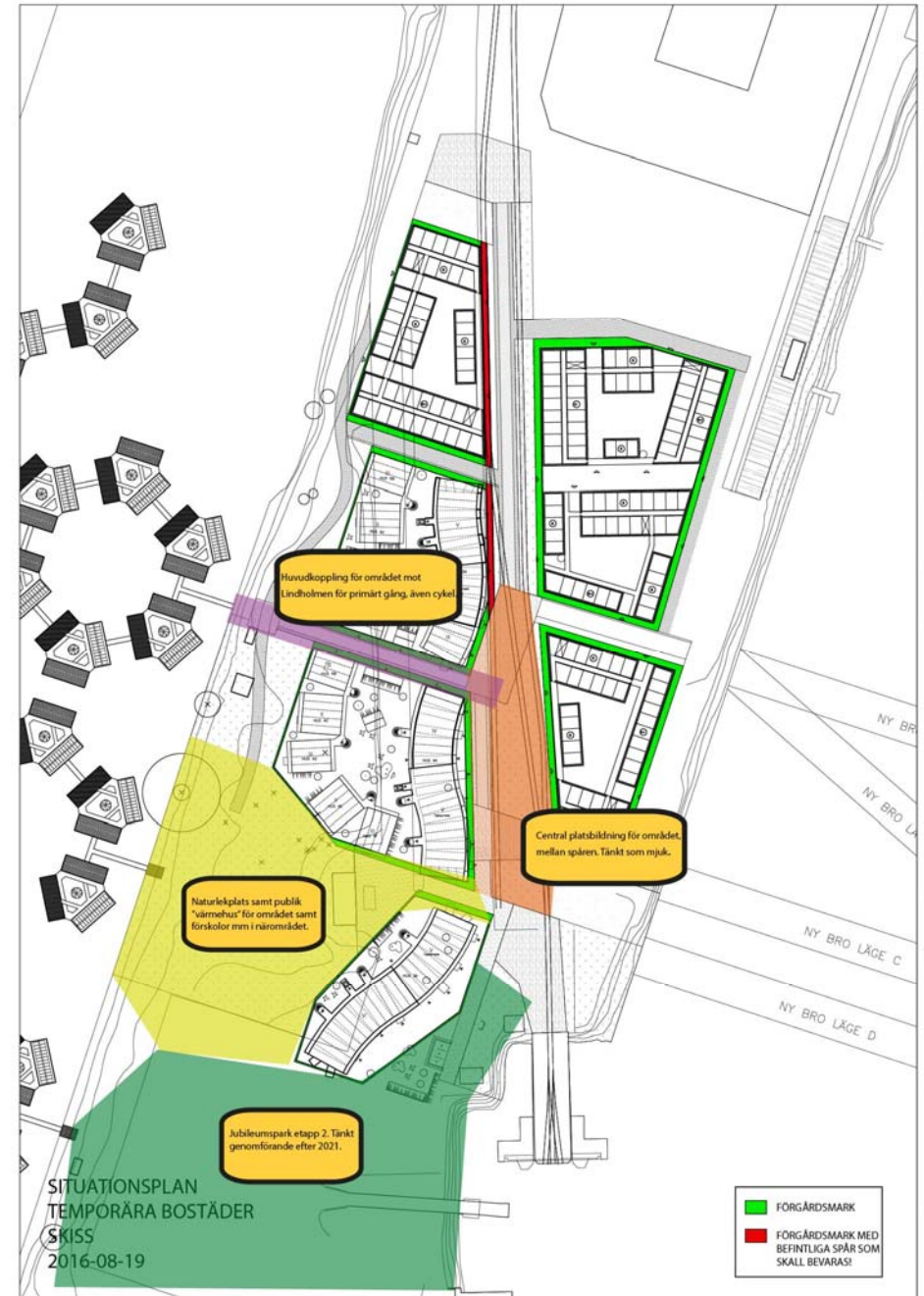
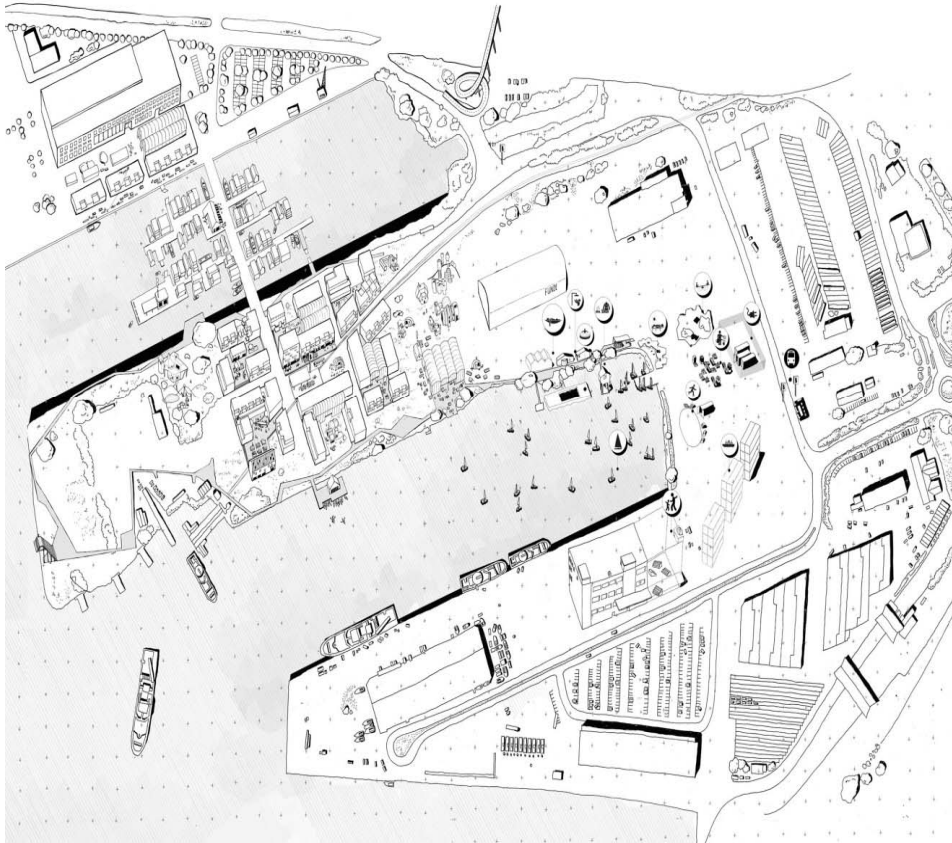
## A meetingplace for all?

- a matter of culture in implementation

- see everyone
- meet everyone
- create together
- learn together
- challenge each other
- push development forward
- navigate the system



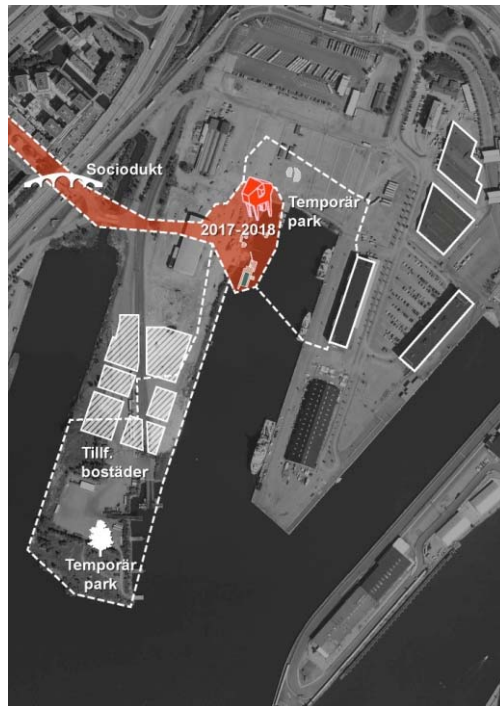
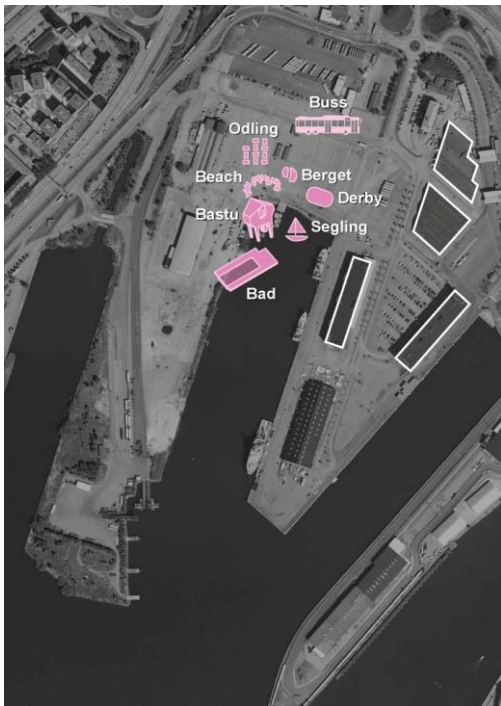
# The temporary city



# The River City



# 2018-2021





# ***IDENTIFYING AND CREATING PUBLIC DOMAIN FOR PLANNING AND IMPLEMENTATION***

Construction of Jubileumsparken got under way in the  
winter

of 2013–2014 with the removal of fencing, casting of a roller  
derby track and installation of electricity and water supply.

This

was seven years before the park was due to be opened as part  
of Gothenburg's 400th anniversary celebrations.





Göteborgs  
Stad

---

ÄLVSTADEN

