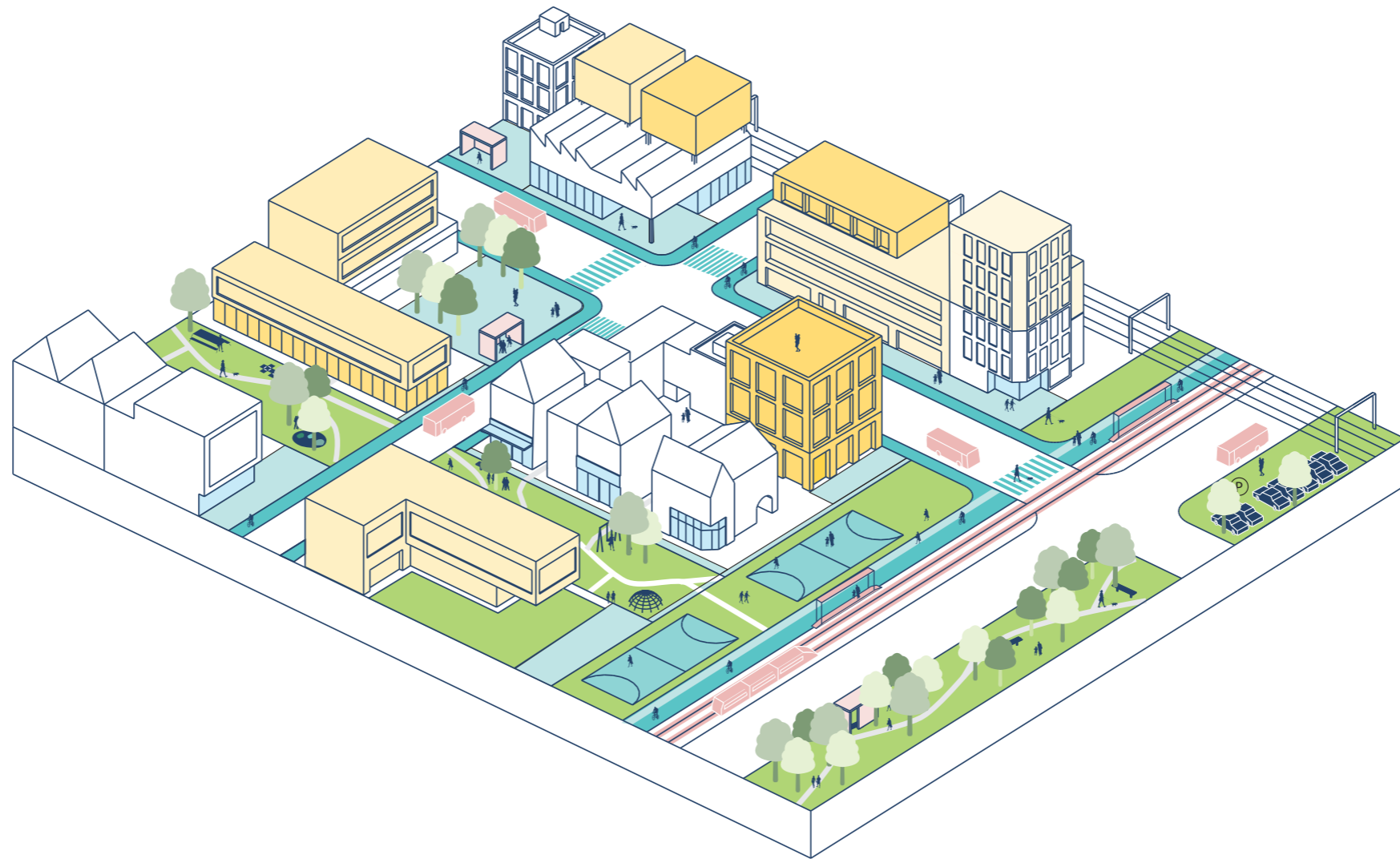


Urban Challenges: Fringe Solutions

Moderated by Jan Edøy



Practitioners' view

Matthias Herding

Solar- and Climate villages Garath, Düsseldorf



Garath 2.0

Mapping the change

Best Practice

Solar village / climate protection village

12th June 2017

Location



Landeshauptstadt
Düsseldorf

Düsseldorf

- Capital of North Rhine-Westphalia
- City on the Rhine
- Growing city
- Germany's most livable city

Within a radius of an hour's drive

- 11,6 million inhabitants
- 500,000 companies

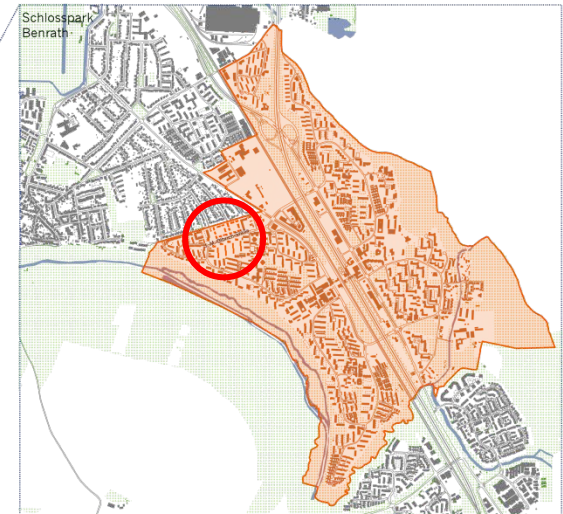
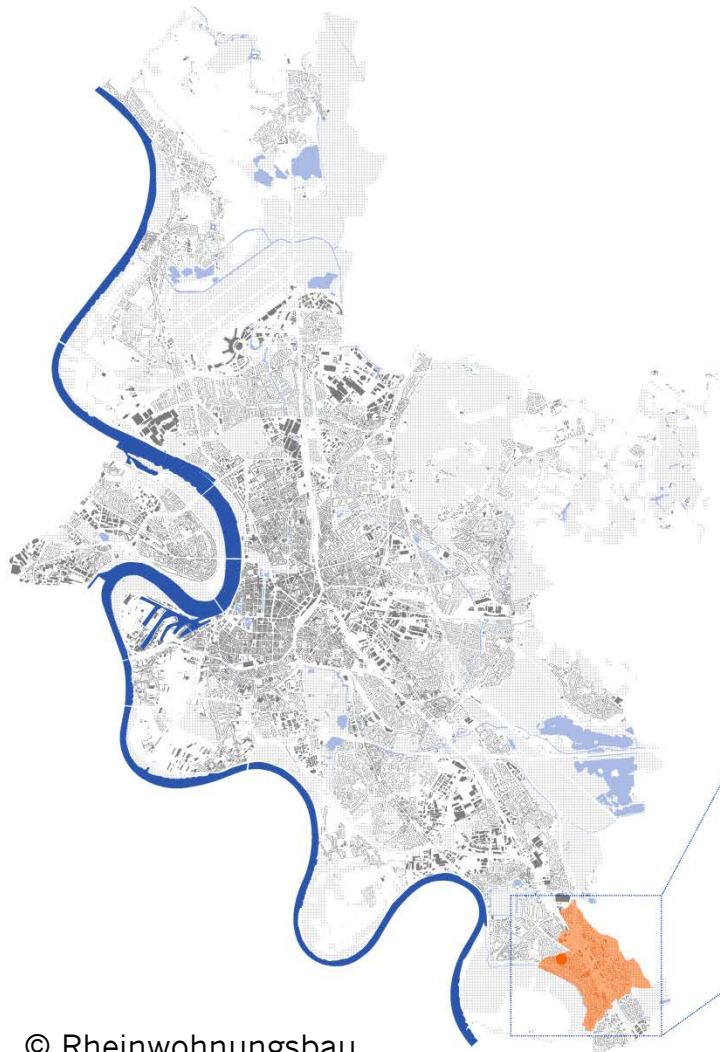
Within a radius of 500 km (311 miles)

- 156 million inhabitants
- 31% of the entire EU population
- 50% of EU purchasing power



:DÜSSELDORF

Location



Social City area Garath
with **project area**

Location



Landeshauptstadt
Düsseldorf



© Rheinwohnungsbau

:DÜSSELDORF

Original Situation



Landeshauptstadt
Düsseldorf



Competition



Landeshauptstadt
Düsseldorf



© Rheinwohnungsbau

:DÜSSELDORF

Challenges



- 90% of the former apartments were inhabited
- Residents were informed early in process
- Questionnaires for residents' requirements
- One-to-one interviews to discuss an implementation agreement
- Housing association accompanied residents through the whole process
- **Nearly every resident found a new home in the renovated or new buildings**

- Costs for new constructions are higher than costs for modernization and refurbishment
- High investment backlog of around € 10 Mio.
- **Investment of 34 Mio. €**

Construction phases

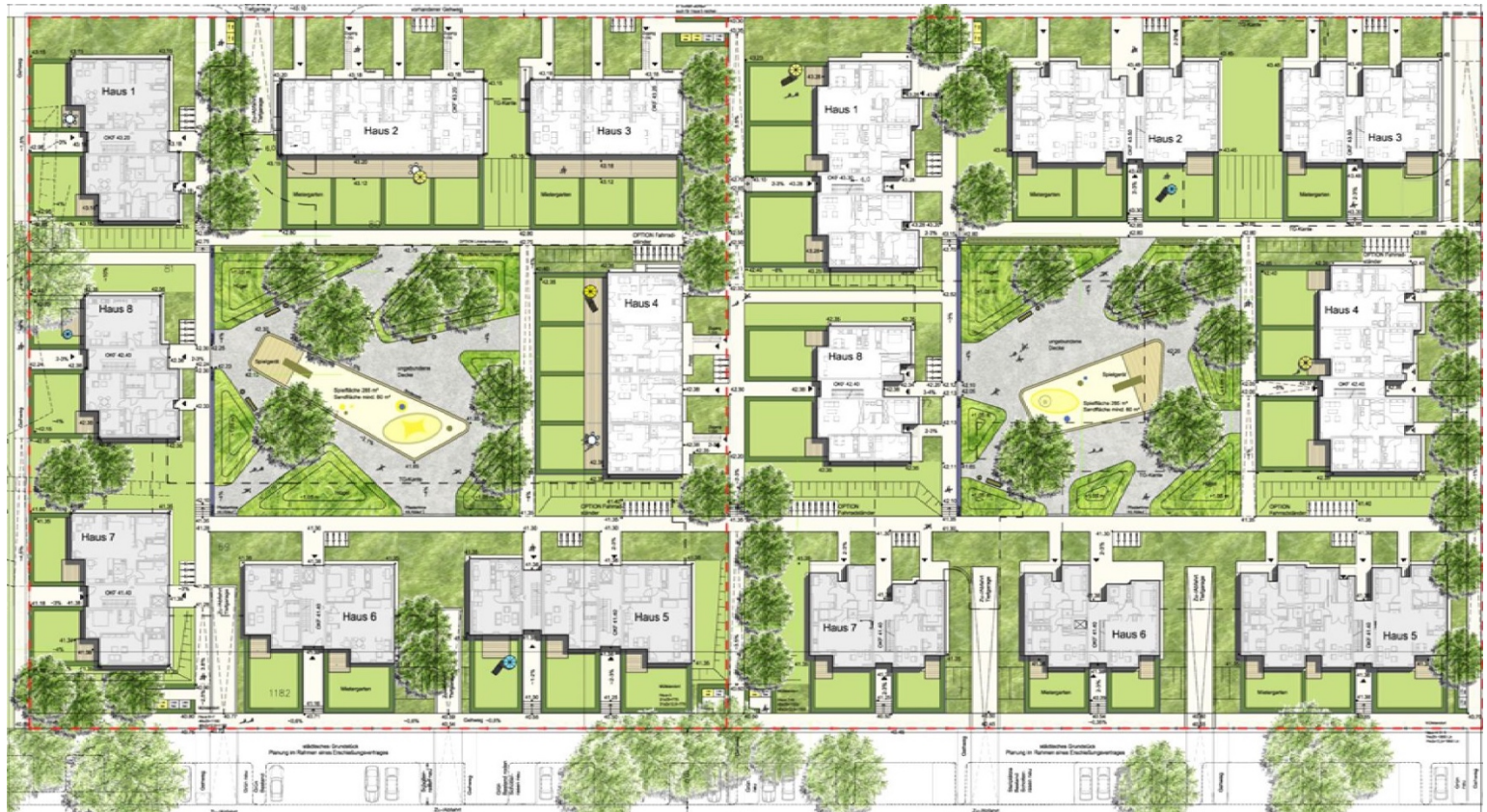


Site plan



Landeshauptstadt
Düsseldorf

Solar village → 1st and 2nd construction phase



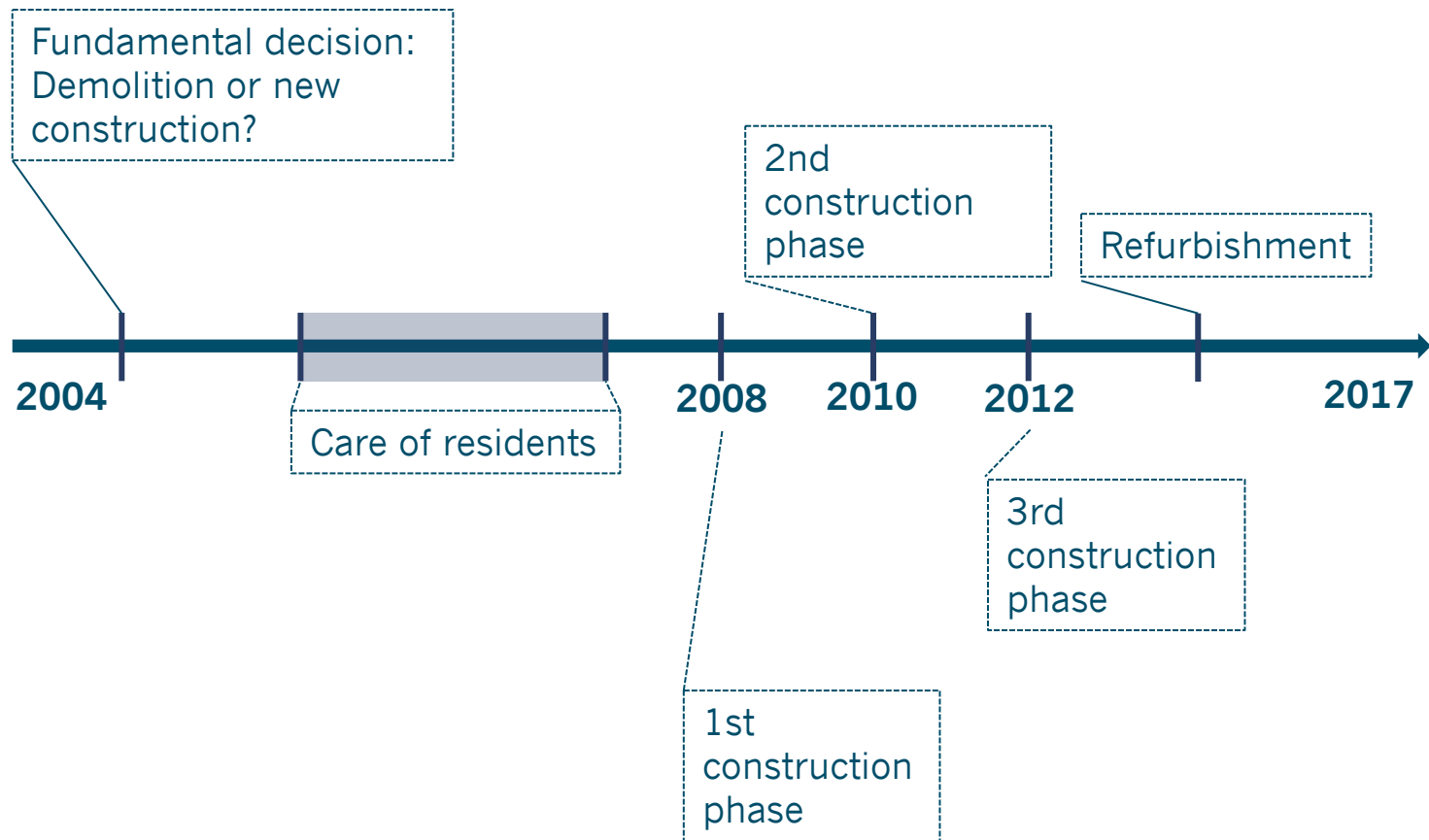
Site plan



Climate protection village → 3rd construction phase



Timeline



Today



Landeshauptstadt
Düsseldorf



© Rheinwohnungsbau

:DÜSSELDORF

Project scope



1st construction phase



- + 57 rented flats with a living space of 4.570m² in total
- + 21 flats are publicly funded of NRW
- + 90% were built barrier-free

2nd construction phase



- + 65 rented flats with a living space of 4.490m² in total
- + 27 flats are publicly funded by NRW
- + 90% were built barrier-free

3rd construction phase



- + 65 rented flats with a living space of 5.100m² in total
- + 12 flats are publicly funded by NRW
- + all flats were built barrier-free



Garath 2.0

Mapping the change

Thank you for listening