

Case study - RIGA

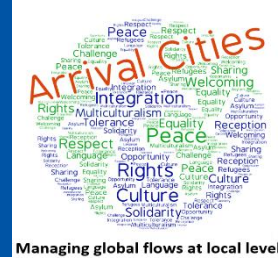
**Socio-economic inclusion of asylum seekers,
refugees and persons who have obtained
the alternative status in Latvia**

Ilze Dūmiņa

Society Integration Foundation

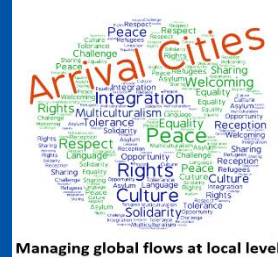


General description



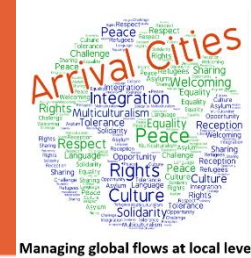
- In 2015 **Latvia has made the commitment to receive 531 persons** within the EU Relocation Programme
- **318** persons relocated (untill 17/05/2017)
- In 2016 **350** applicants applied for asylum in Latvia (*including 163 EU Relocation Programme*).
- TOP 3 countries: Syria, Afghanistan, Russia
- In 2017 (at the end of April) **211** applicants applied for asylum in Latvia (*including 145 EU Relocation Programme*)
- TOP 3 countries: Syria, Eritrea, Kazakhstan
- In 2016 and 2017 (at the end of April) **4** unaccompanied minors

During the asylum procedure



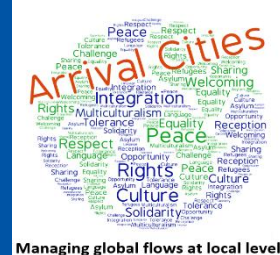
- Reception centre for asylum seekers “Mucenieki”
- 148 asylum seekers (on April 2017)
- 3 EUR per day
- Acquisition of **Latvian language** (120h)
- **5 introductory courses for 4h**: regarding culture, accommodation, employment, education, health care, social security, social assistance + **activities** for getting acquainted with the history and cultural objects in Latvia
- **Introductory courses regarding employment**
- Learning materials and informative **animation clips**
- Website www.beglis.lv (in 6 languages)

Benefit after receiving a status

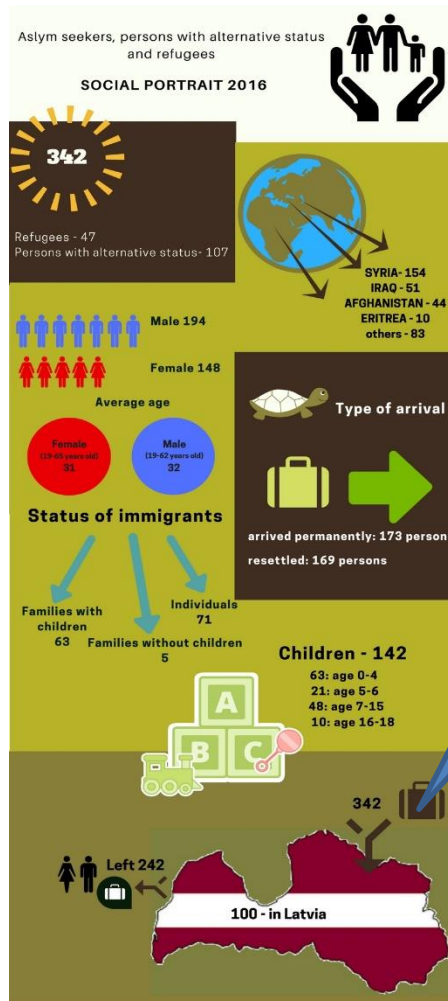
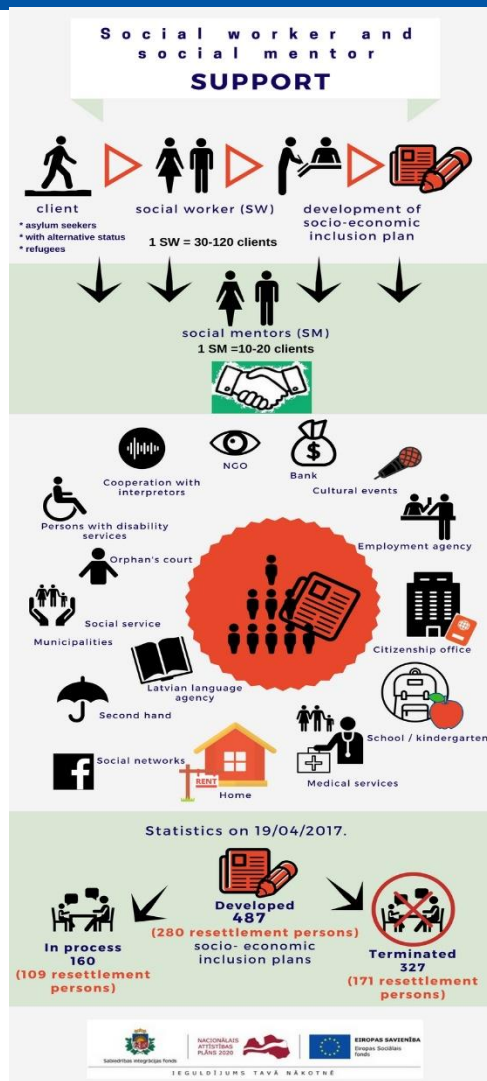


- benefit to a refugee (for 12 months/ **10 months**)
- person who has been granted alternative status (for 9 months/ **7 months**)
- 139 EUR per months for the first family member and 97.00 EUR per months for each next family member.
- Extraordinary financial support in an amount of the current benefit of 2 months and benefit for covering subsistence costs.
- Benefit to unaccompanied minors - 139 EUR per month.
- Asylum law determine economic activity as a precondition for a benefit receipt.

Service of social workers and social mentors



Managing global flows at local level



From 6 of April 2016 till 30 April, 2017 support was provided for **526** asylum seekers, refugees and persons with alternative status.



European Union
European Regional Development Fund



REGULĀCIJUMS TAVĀ NĀKOTNĒ



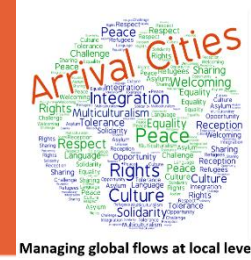
REGULĀCIJUMS TAVĀ NĀKOTNĒ



Connecting cities
Building successes



Challenges



- Lack of sufficient Latvian language knowledge is a significant challenge for involvement in the Latvian labour market, formal education system, professional competences or education courses
- Latvia has the most negative attitude towards refugees in the whole European Union
- Almost all persons provided asylum in Latvia have left (from 526 – 313 (196 relocated people) have left)



